



CATALOGUE OF HOT AIR FIREPLACE INSERTS

BEF HOME

fire for your heart

BEF ROYAL	2
BEF THERM	12
BEF FEEL	28
BEF FLAT	42
BEF TOWER	46
BEF LONG	47
BEF DOUBLE FEEL	48
BEF TWIN II.	52
BEF EFFI	60
BEF SPIRIT	66



CZ | Kotvrdovice 277
679 07 Kotvrdovice
Czech Republic

tel.: +420 516 428 240
e-mail: info@bef.cz
IČ: 25 52 46 82
DIČ: CZ 25 52 46 82

SK | Turá Lúka 97
907 03 Myjava
Slovakia

tel.: +421 346 216 790
e-mail: info@bef.sk

PL | Bąków ul. Główna 4a
43-246 Strumień
Poland

tel.: +48 530 712 534
tel.: +48 530 712 624
e-mail: info@befpolska.pl

FR | 1 Place de l'Homme de Fer
67 000 Strasbourg
France

tél.: 00 33 672 383 113
e-mail: info@foyers-bef.fr

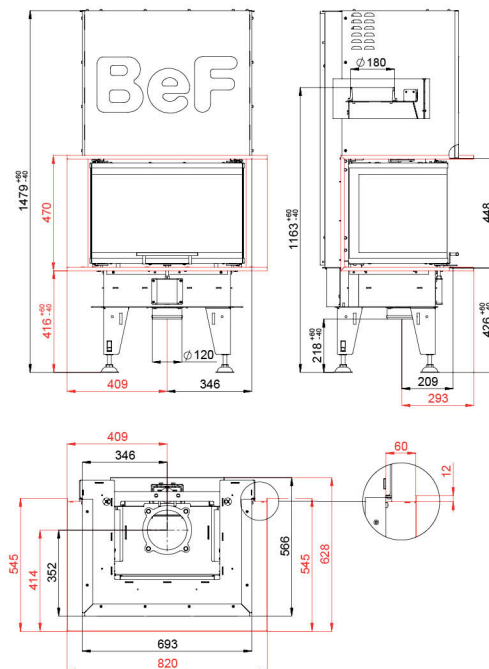


BEF ROYAL V 6 C

BImSchV
Stufe 2

15a
B - VG

ČSN EN
13229

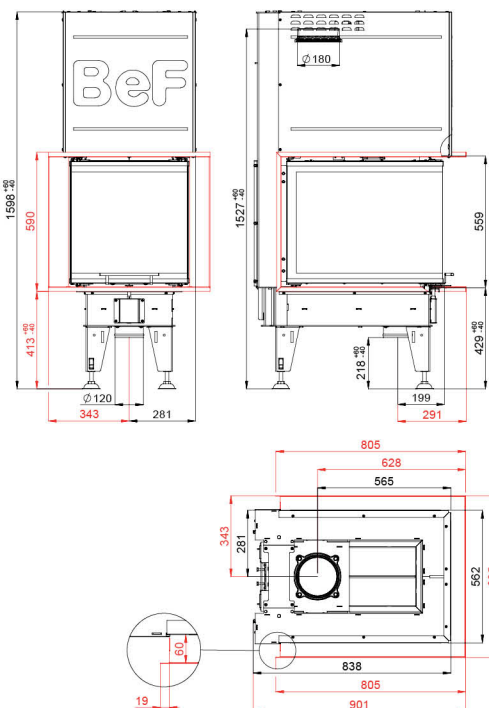


BEF ROYAL V 6 U

BImSchV
Stufe 2

15a
B - VG

ČSN EN
13229



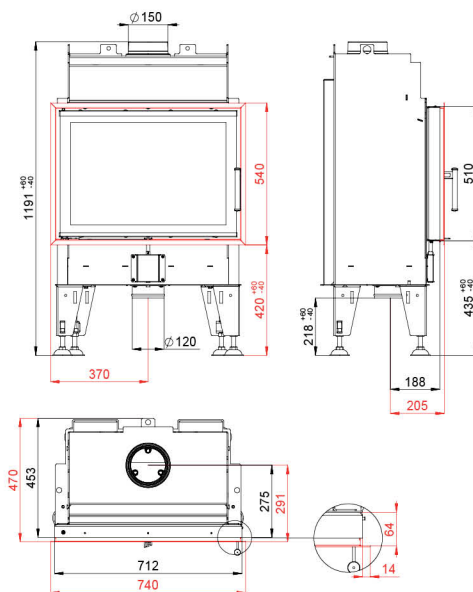


BEF ROYAL 7

BlmSchV
Stufe 2

15a
B - VG

ČSN EN
13229

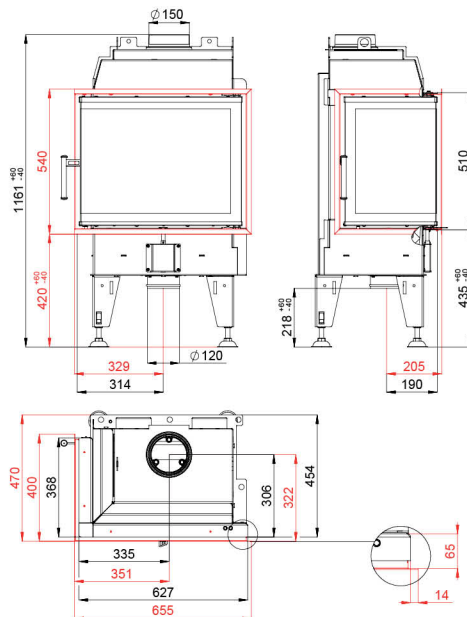


BEF ROYAL 7 CL/CP

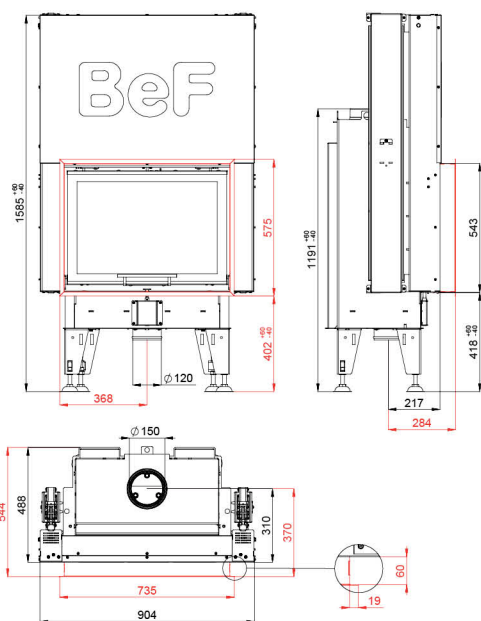
BlmSchV
Stufe 2

15a
B - VG

ČSN EN
13229



BEF THERM V 7



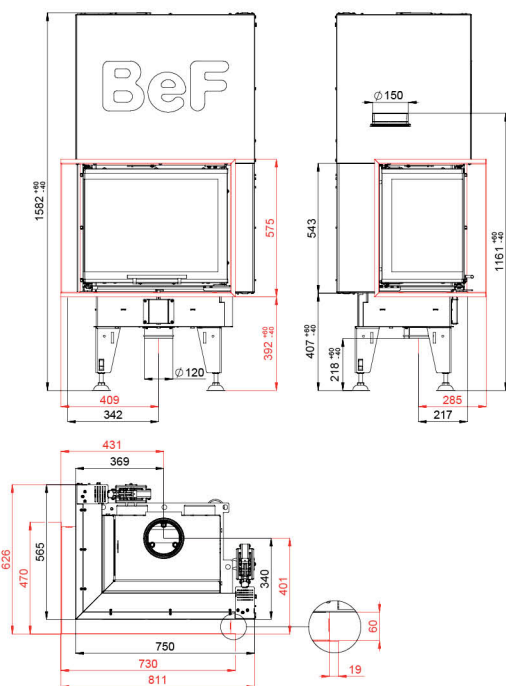
BImSchV
Stufe 2

15a
B - VG

ČSN EN
13229



BEF THERM V 7 CL/CP



BImSchV
Stufe 2

15a
B - VG

ČSN EN
13229

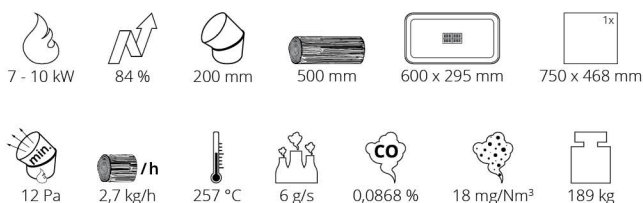
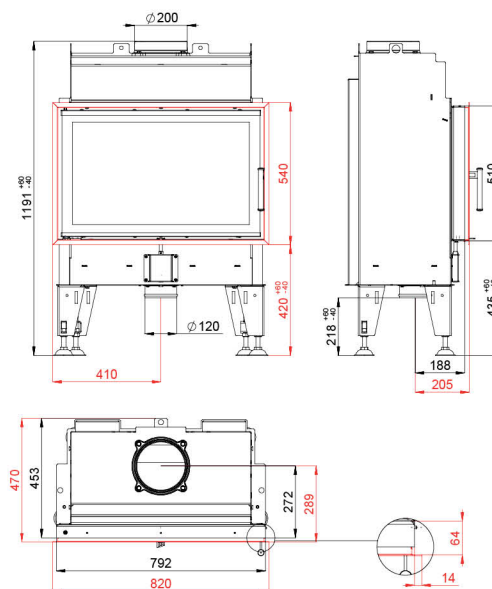


BEF ROYAL 8

BImSchV
Stufe 2

15a
B - VG

ČSN EN
13229

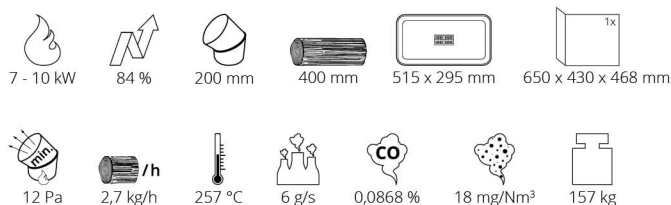
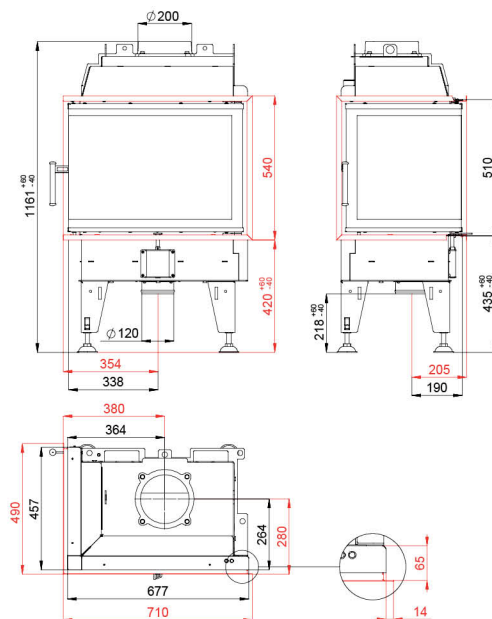


BEF ROYAL 8 CL/CP

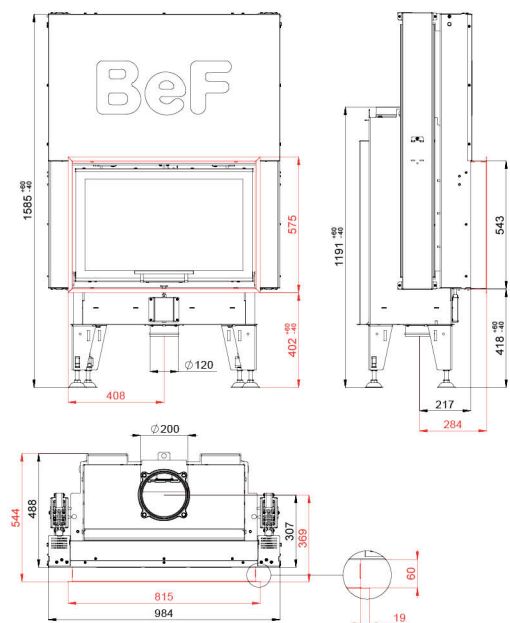
BImSchV
Stufe 2

15a
B - VG

ČSN EN
13229



BEF THERM V 8



BImSchV
Stufe 2

15a
B - VG

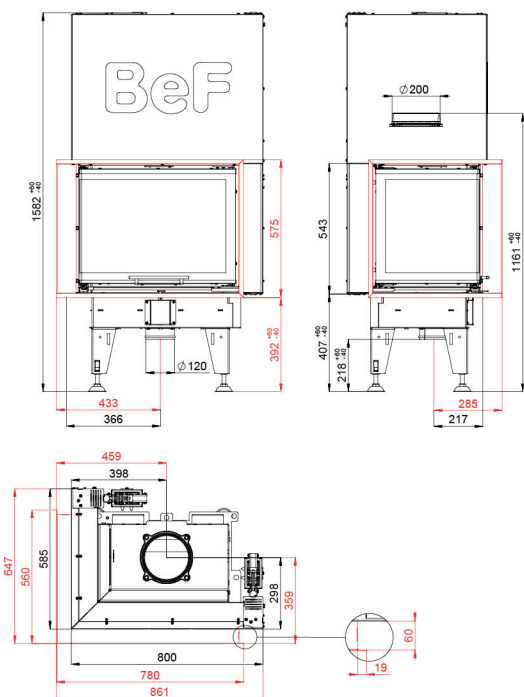
ČSN EN
13229



- 7 - 10 kW
- 84 %
- 200 mm
- 500 mm
- 600 x 295 mm
- 750 x 468 mm

- 12 Pa
- 2,7 kg/h
- 257 °C
- 6 g/s
- 0,0868 %
- 18 mg/Nm³
- 268 kg

BEF THERM V 8 CL/CP



BImSchV
Stufe 2

15a
B - VG

ČSN EN
13229



- 7 - 10 kW
- 84 %
- 200 mm
- 400 mm
- 515 x 295 mm
- 650 x 430 x 468 mm

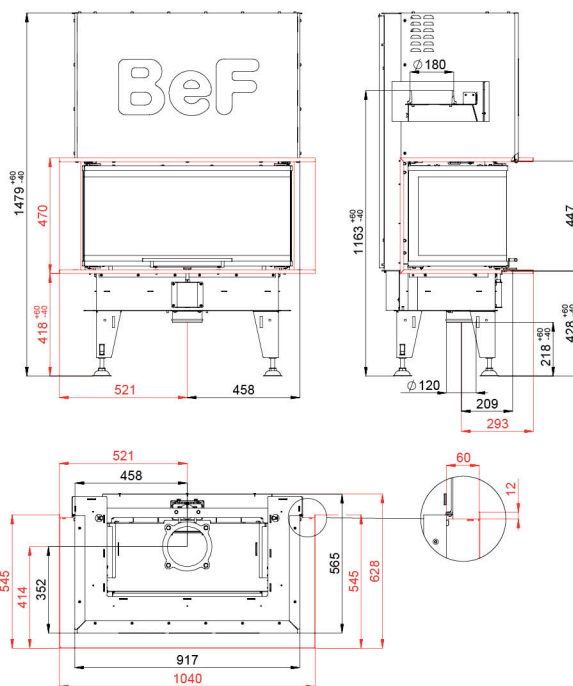
- 12 Pa
- 2,7 kg/h
- 257 °C
- 6 g/s
- 0,0868 %
- 18 mg/Nm³
- 250 kg

BEF ROYAL V 8 C

BImSchV
Stufe 2

15a
B - VG

ČSN EN
13229



- 7 - 10 kW
- 84 %
- 180 mm
- 500 mm
- 621 x 251 mm
- 848 x 400 x 400 mm

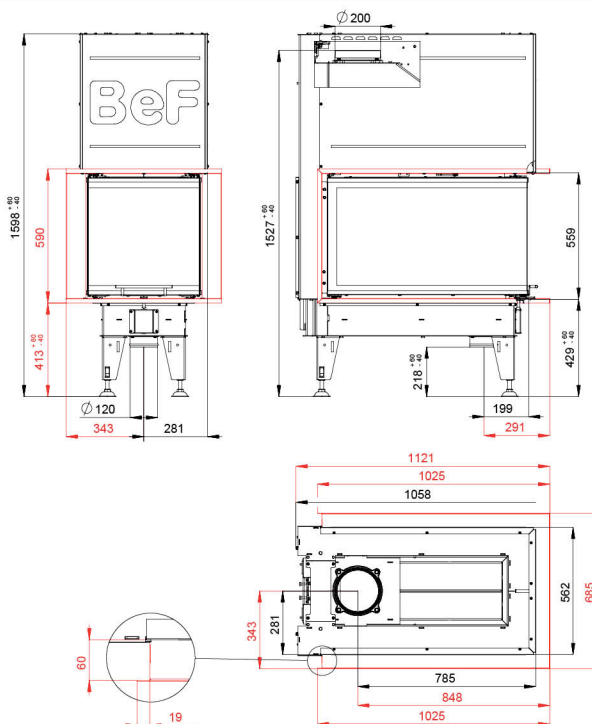
- 12 Pa
- 2,7 kg/h
- 257 °C
- 6 g/s
- 0,0868 %
- 18 mg/Nm³
- 265 kg

BEF ROYAL V 8 U

BImSchV
Stufe 2

15a
B - VG

ČSN EN
13229



- 7 - 10 kW
- 84 %
- 200 mm
- 660 mm
- 282 x 711 mm
- 500 x 880 x 510 mm

- 12 Pa
- 2,7 kg/h
- 257 °C
- 6 g/s
- 0,0868 %
- 18 mg/Nm³
- 381 kg

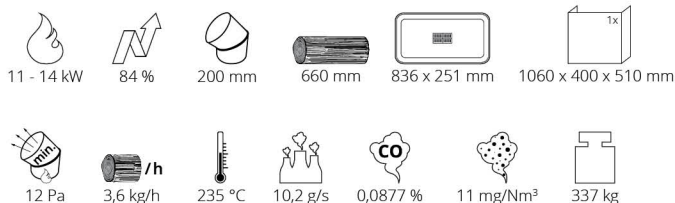
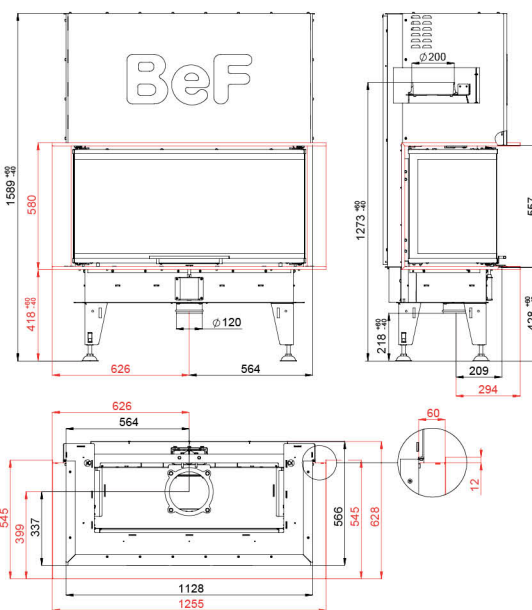


BEF ROYAL V 10 C

BImSchV
Stufe 2

15a
B-VG

ČSN EN
13229

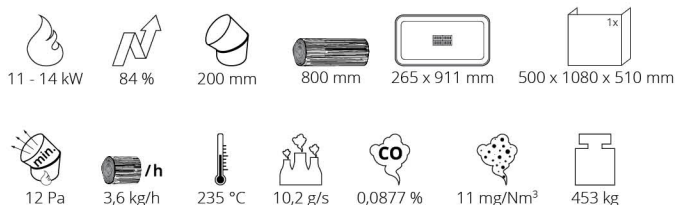
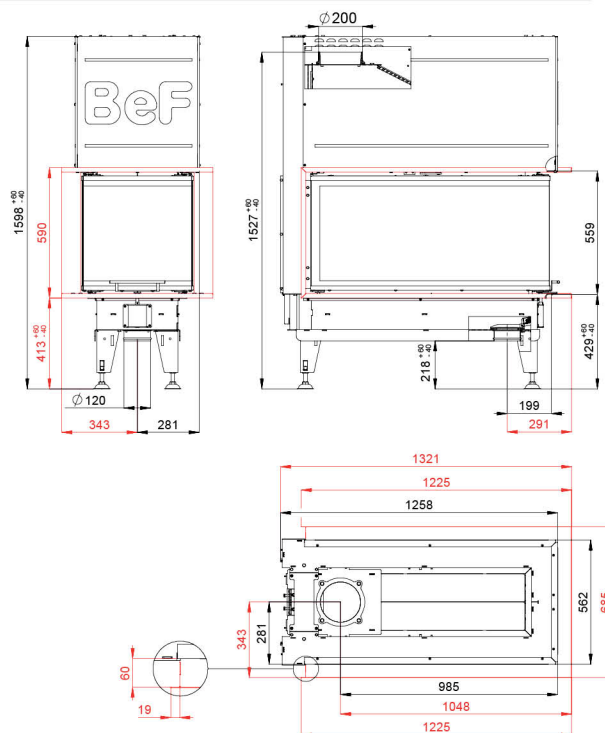


BEF ROYAL V 10 U

BImSchV
Stufe 2

15a
B-VG

ČSN EN
13229



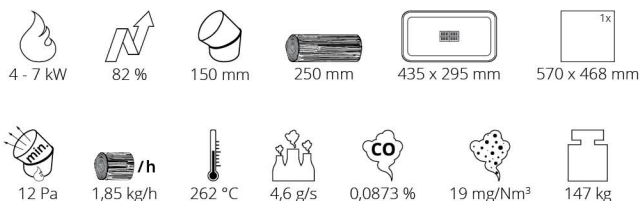
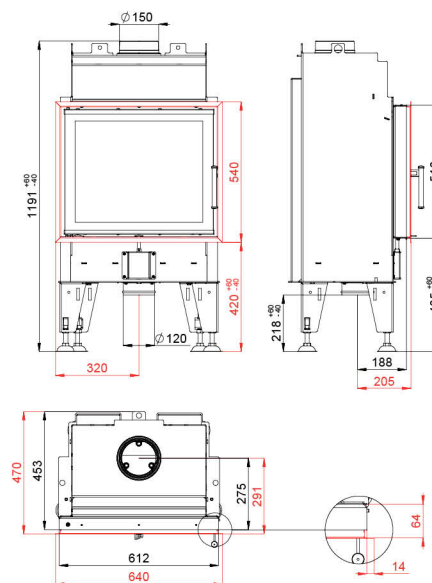


BEF THERM 6

BImSchV
Stufe 2

15a
B - VG

ČSN EN
13229

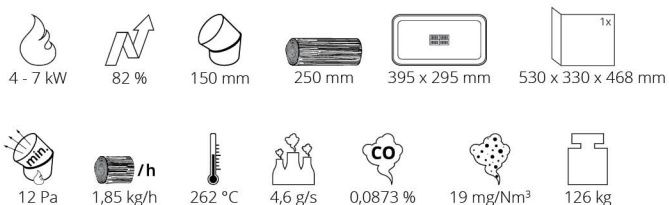
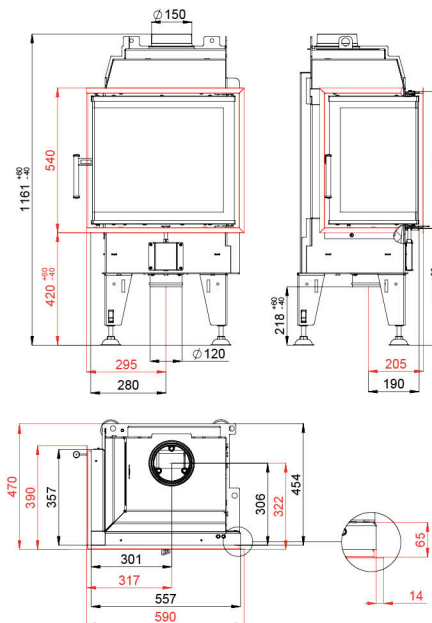


BEF THERM 6 CL/CP

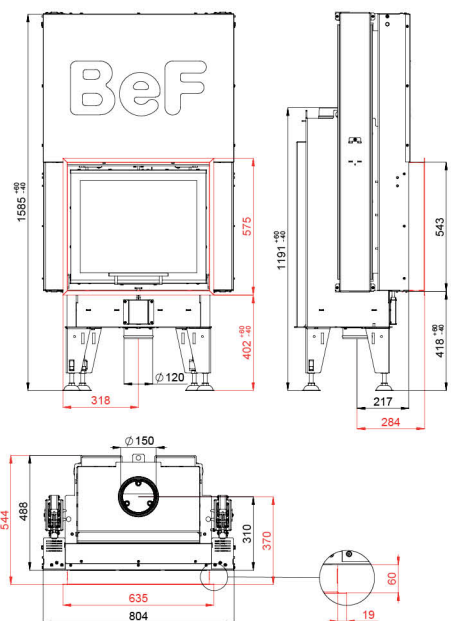
BImSchV
Stufe 2

15a
B - VG

ČSN EN
13229



BEF THERM V 6



BImSchV
Stufe 2

15a
B - VG

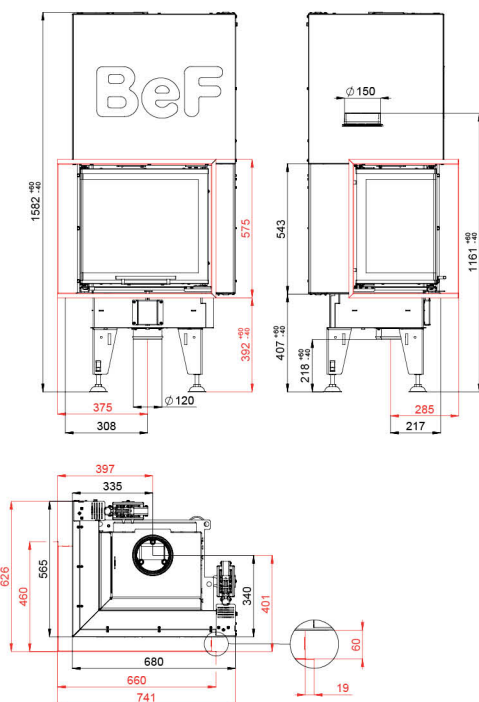
ČSN EN
13229



- 4 - 7 kW
- 82 %
- 150 mm
- 250 mm
- 435 x 295 mm
- 1x

- 12 Pa
- 1,85 kg/h
- 262 °C
- 4,6 g/s
- 0,0873 %
- 19 mg/Nm³
- 227 kg

BEF THERM V 6 CL/CP



BImSchV
Stufe 2

15a
B - VG

ČSN EN
13229



- 4 - 7 kW
- 82 %
- 150 mm
- 250 mm
- 395 x 295 mm
- 1x

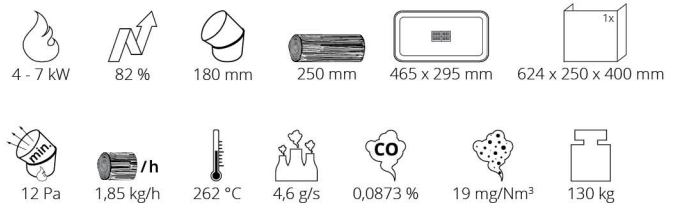
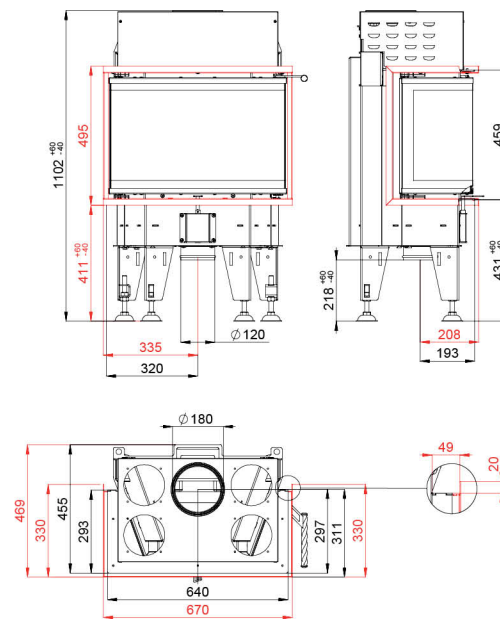
- 12 Pa
- 1,85 kg/h
- 262 °C
- 4,6 g/s
- 0,0873 %
- 19 mg/Nm³
- 236 kg

BEF THERM 6 C

BImSchV
Stufe 2

15a
B - VG

ČSN EN
13229

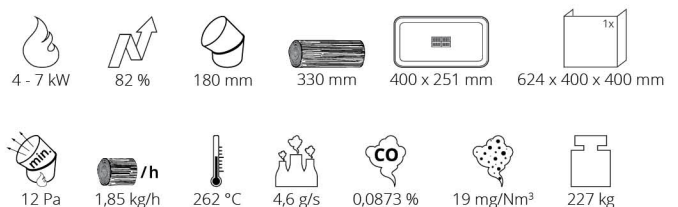
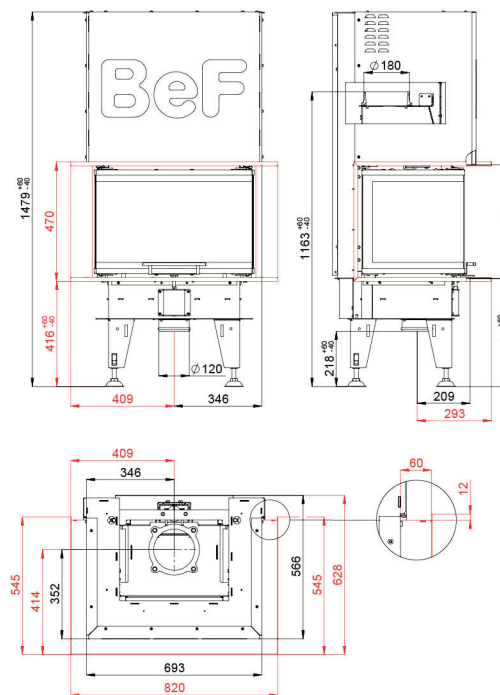


BEF THERM V 6 C

BImSchV
Stufe 2

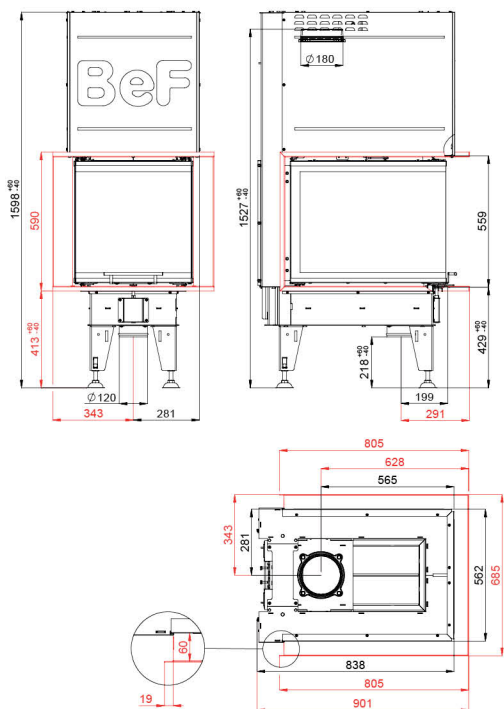
15a
B - VG

ČSN EN
13229





BEF THERM V 6 U



BImSchV
Stufe 2

15a
B - VG

ČSN EN
13229

eco
design



4 - 7 kW
 82 %
 180 mm
 400 mm
 282 x 491 mm
 500 x 660 x 510 mm

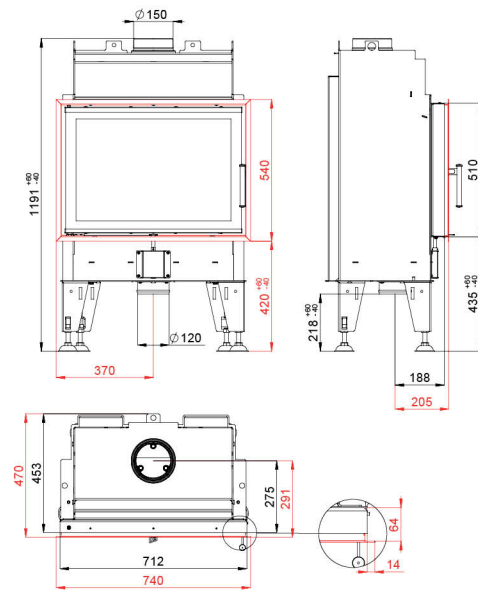
12 Pa
 1,85 kg/h
 262 °C
 4,6 g/s
 0,0873 %
 19 mg/Nm³
 322 kg

BEF THERM 7

BlmSchV
Stufe 2

15a
B - VG

ČSN EN
13229

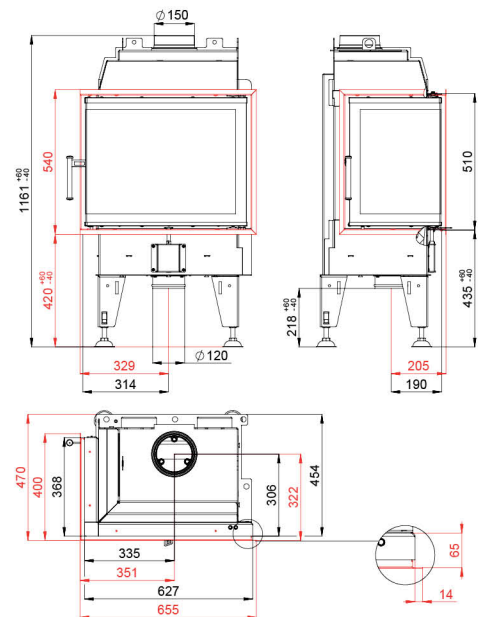


BEF THERM 7 CL/CP

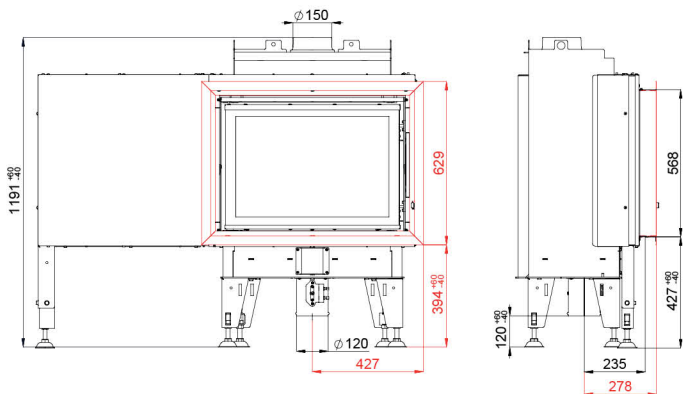
BlmSchV
Stufe 2

15a
B - VG

ČSN EN
13229



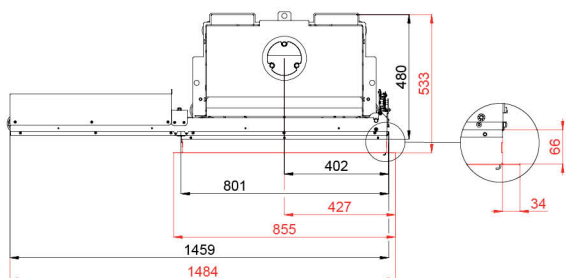
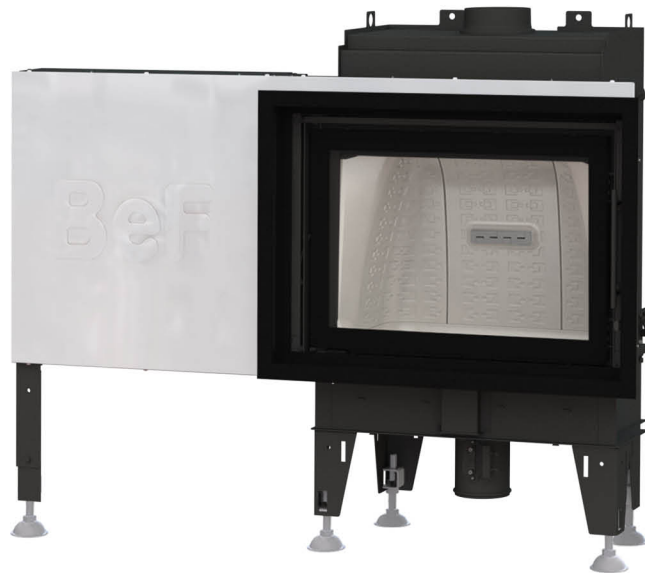
BEF THERM B 7



BlmSchV
Stufe 2

15a
B - VG

ČSN EN
13229



- 5 - 8 kW
- 82 %
- 150 mm
- 400 mm
- 520 x 295 mm
- 670 x 468 mm

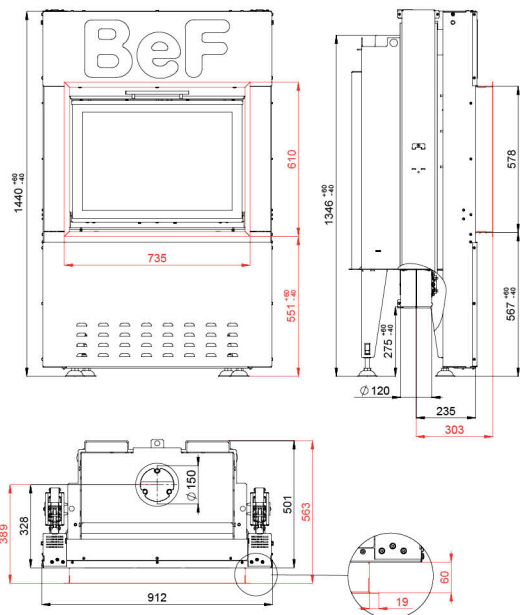
- 12 Pa
- 2,05 kg/h
- 264 °C
- 5,6 g/s
- 0,0868 %
- 19 mg/Nm³
- 218 kg

BEF THERM S 7

BlmSchV
Stufe 2

15a
B - VG

ČSN EN
13229



- 5 - 8 kW
- 82 %
- 150 mm
- 400 mm
- 520 x 295 mm
- 670 x 468 mm

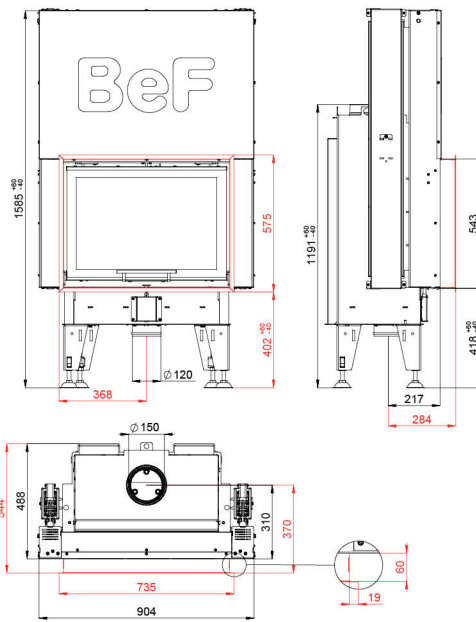
- 12 Pa
- 2,05 kg/h
- 264 °C
- 5,6 g/s
- 0,0868 %
- 19 mg/Nm³
- 264 kg

BEF THERM V 7

BlmSchV
Stufe 2

15a
B - VG

ČSN EN
13229

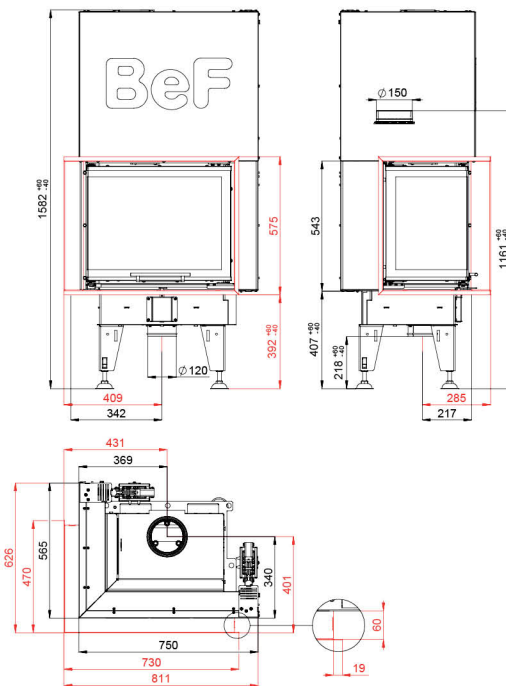


BEF THERM V 7 CL/CP

BlmSchV
Stufe 2

15a
B - VG

ČSN EN
13229



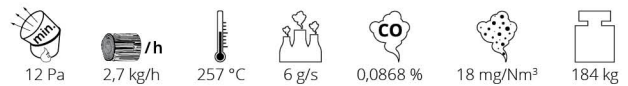
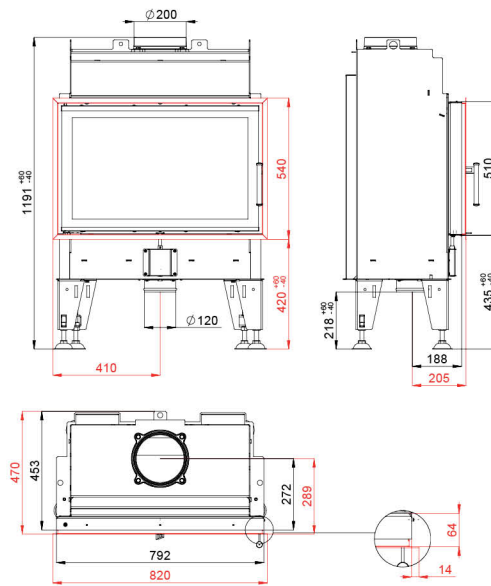


BEF THERM 8

BImSchV
Stufe 2

15a
B - VG

ČSN EN
13229

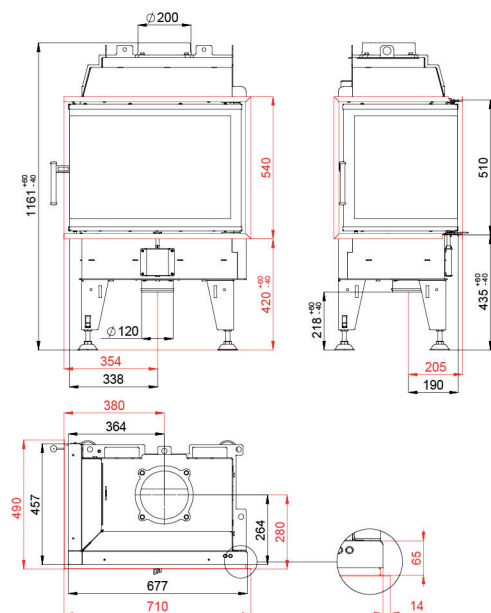


BEF THERM 8 CL/CP

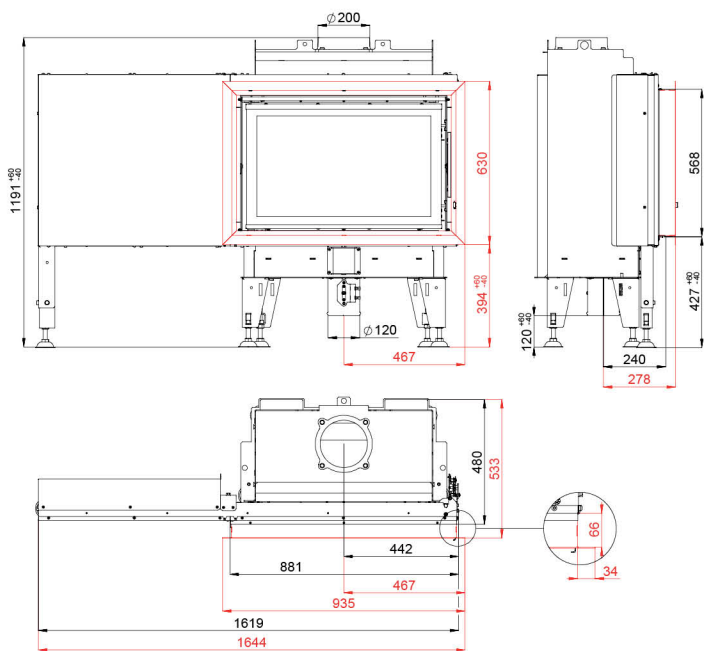
BImSchV
Stufe 2

15a
B - VG

ČSN EN
13229



BEF THERM B 8



BImSchV
Stufe 2

15a
B - VG

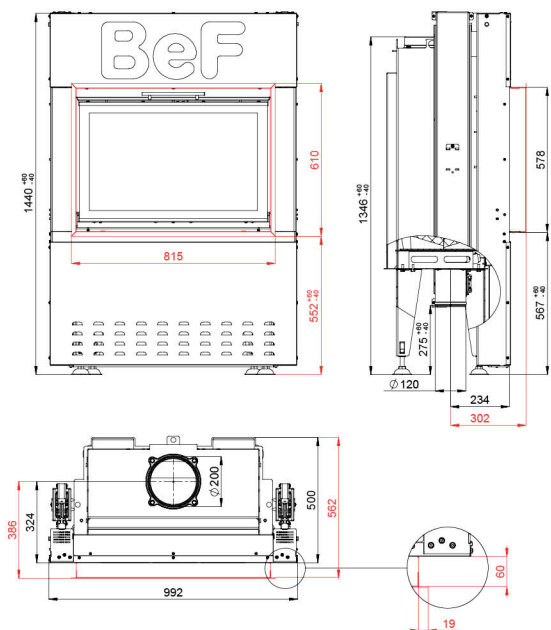
ČSN EN
13229



- 7 - 10 kW
- 84 %
- 200 mm
- 500 mm
- 600 x 295 mm
- 750 x 468 mm

- 12 Pa
- 2,7 kg/h
- 257 °C
- 6 g/s
- 0,0868 %
- 18 mg/Nm³
- 238 kg

BEF THERM S 8



BImSchV
Stufe 2

15a
B - VG

ČSN EN
13229



- 7 - 10 kW
- 84 %
- 200 mm
- 500 mm
- 600 x 295 mm
- 750 x 468 mm

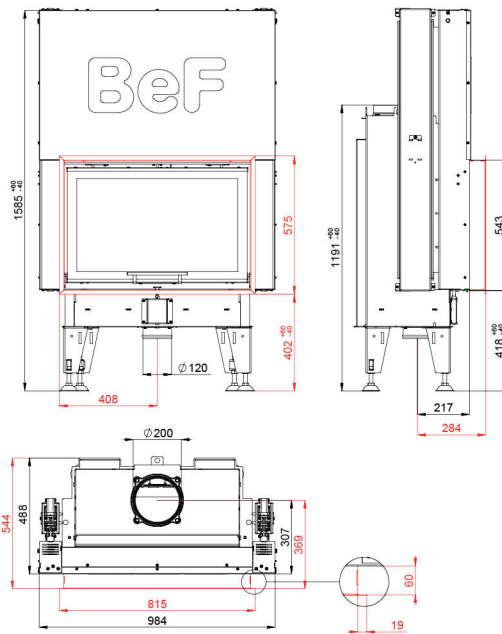
- 12 Pa
- 2,7 kg/h
- 257 °C
- 6 g/s
- 0,0868 %
- 18 mg/Nm³
- 295 kg

BEF THERM V 8

BImSchV
Stufe 2

15a
B - VG

ČSN EN
13229

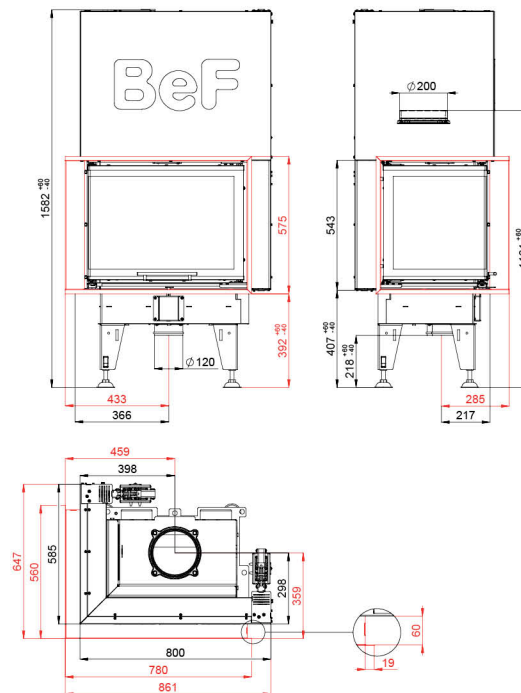


BEF THERM V 8 CL/CP

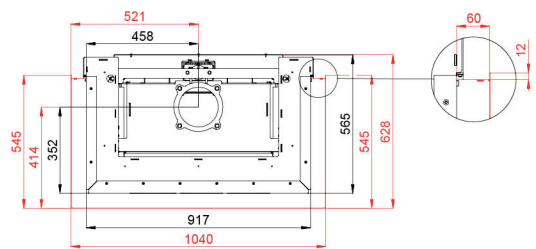
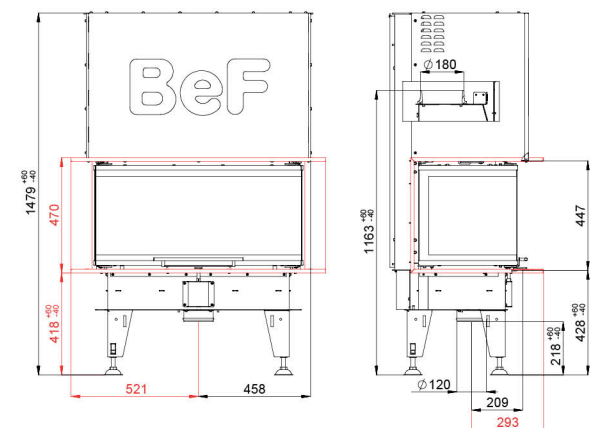
BImSchV
Stufe 2

15a
B - VG

ČSN EN
13229



BEF THERM V 8 C



- 7 - 10 kW
- 84 %
- 180 mm
- 500 mm
- 621 x 251 mm
- 848 x 400 x 400 mm

- 12 Pa
- 2,7 kg/h
- 257 °C
- 6 g/s
- 0,0868 %
- 18 mg/Nm³
- 260 kg



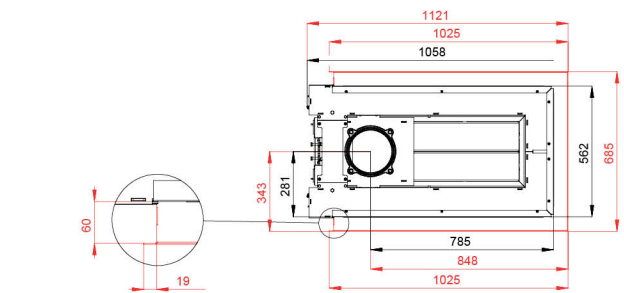
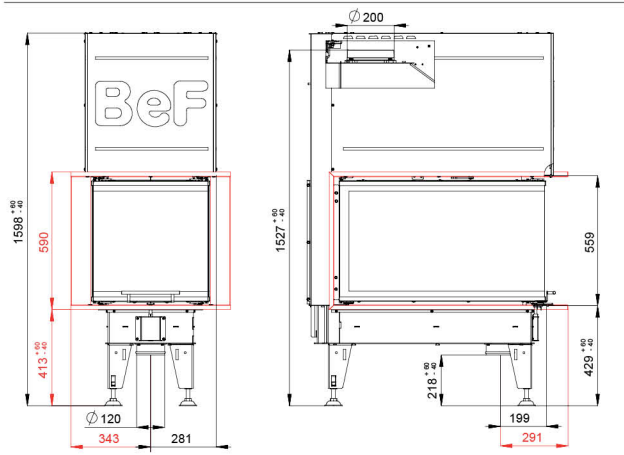
BlmSchV
Stufe 2

15a
B - VG

ČSN EN
13229



BEF THERM V 8 U



- 7 - 10 kW
- 84 %
- 200 mm
- 660 mm
- 282 x 711 mm
- 500 x 880 x 510 mm

- 12 Pa
- 2,7 kg/h
- 257 °C
- 6 g/s
- 0,0868 %
- 18 mg/Nm³
- 376 kg



BlmSchV
Stufe 2

15a
B - VG

ČSN EN
13229

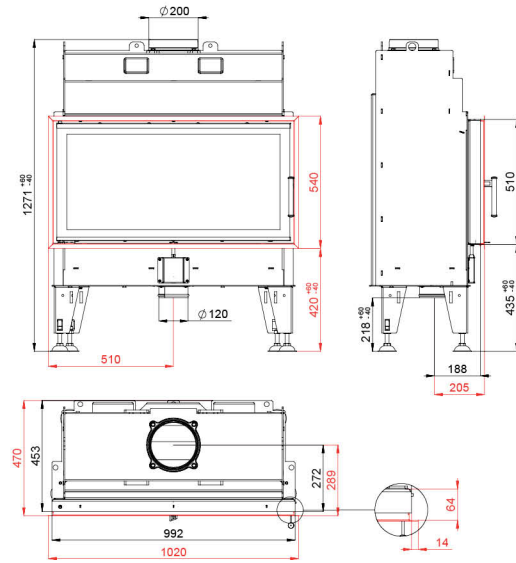


BEF THERM 10

BlmSchV
Stufe 2

15a
B - VG

ČSN EN
13229

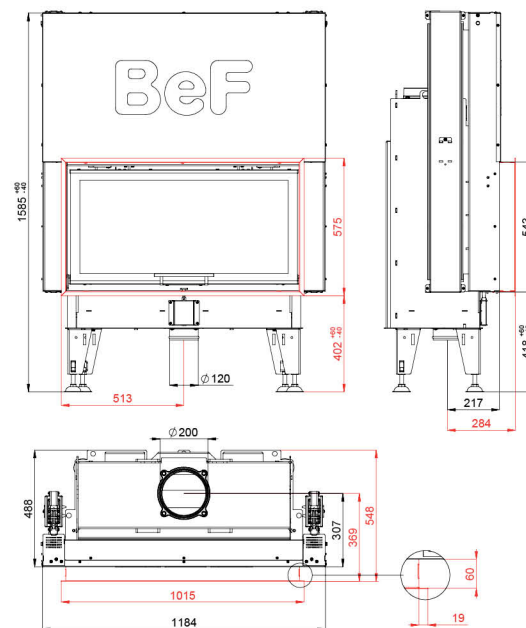


BEF THERM V 10

BlmSchV
Stufe 2

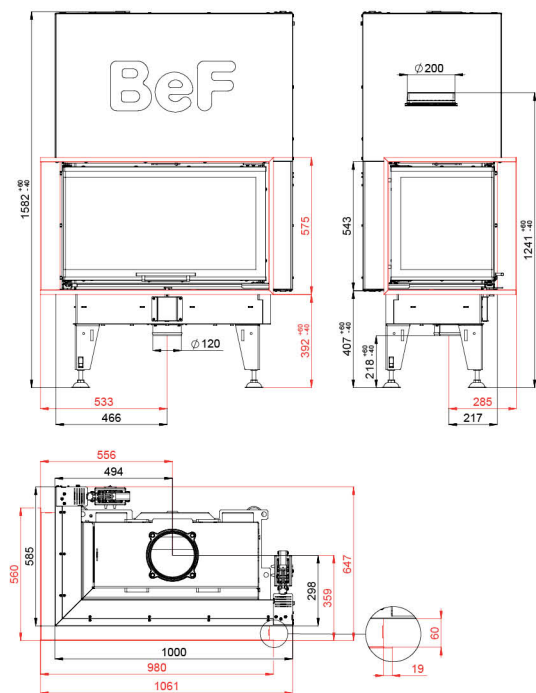
15a
B - VG

ČSN EN
13229





BEF THERM V 10 CL/CP



BImSchV
Stufe 2

15a
B - VG

ČSN EN
13229

eco
design



11 - 14 kW
 84 %
 200 mm
 660 mm
 715 x 295 mm
 850 x 430 x 468 mm

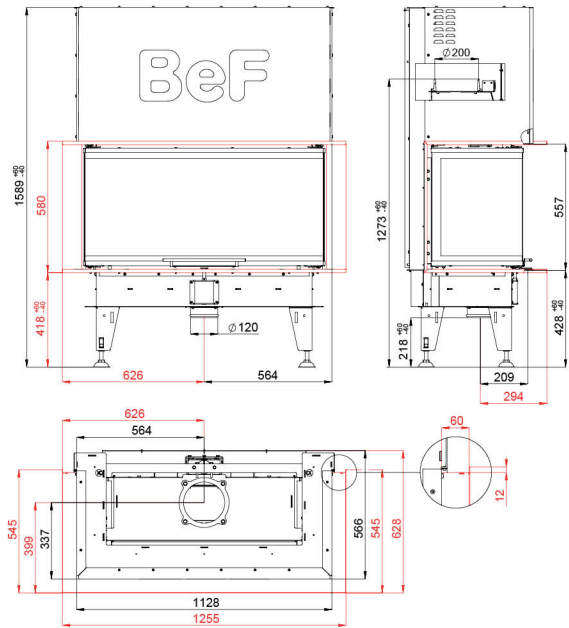
12 Pa
 3,6 kg/h
 235 °C
 10,2 g/s
 0,0877 %
 11 mg/Nm³
 287 kg

BEF THERM V 10 C

BImSchV
Stufe 2

15a
B - VG

ČSN EN
13229

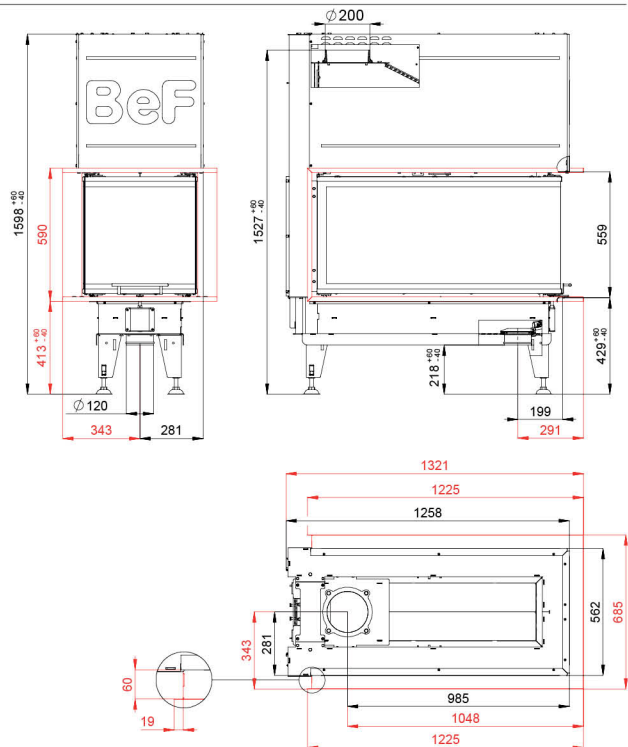


BEF THERM V 10 U

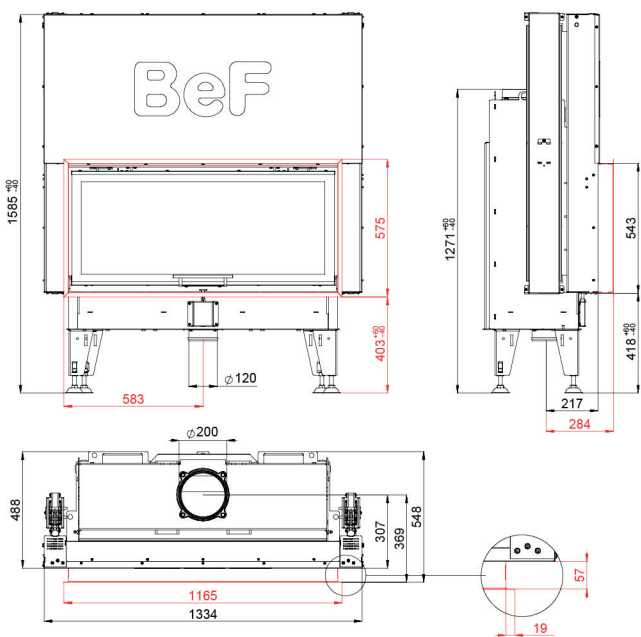
BImSchV
Stufe 2

15a
B - VG

ČSN EN
13229



BEF THERM V 12



BlmSchV
Stufe 2

15a
B - VG

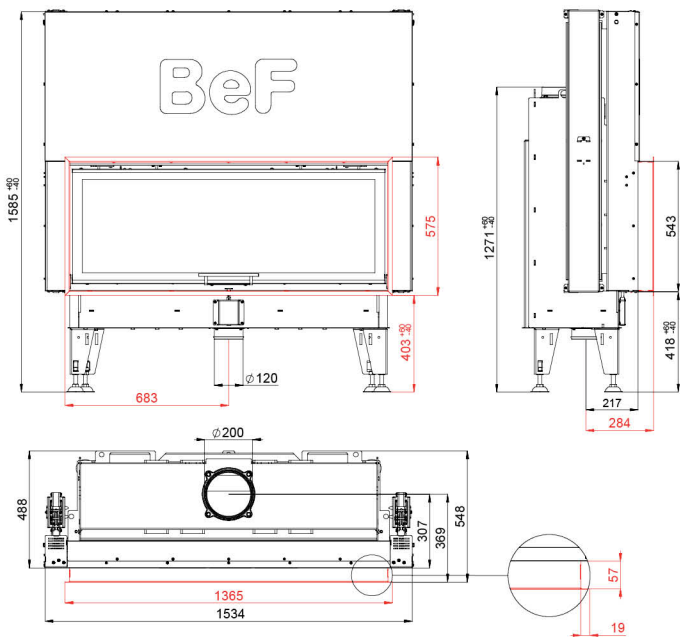
ČSN EN
13229



11,5 - 14,5 kW 80 % 200 mm 800 mm 954 x 298 mm 1100 x 468 mm

10 Pa 4 kg/h 256 °C 12 g/s 0,0898 % 30 mg/Nm³ 354 kg

BEF THERM V 14



BlmSchV
Stufe 2

15a
B - VG

ČSN EN
13229



12 - 15 kW 82 % 200 mm 1000 mm 1154 x 298 mm 1300 x 468 mm

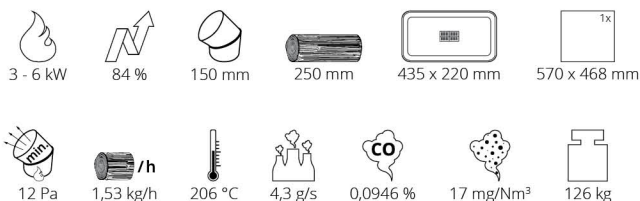
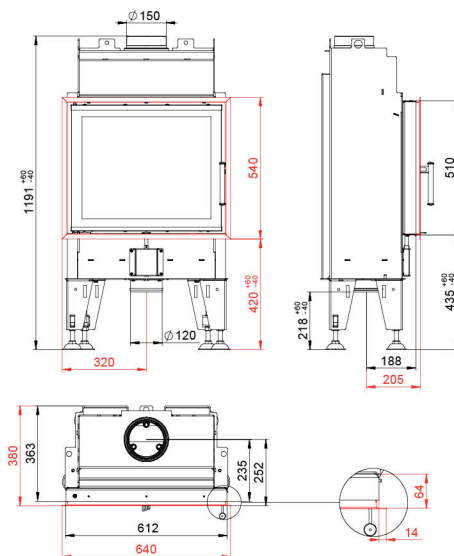
10 Pa 4 kg/h 262 °C 10,3 g/s 0,0985 % 26 mg/Nm³ 406 kg

BEF FEEL 6

BImSchV
Stufe 2

15a
B - VG

ČSN EN
13229

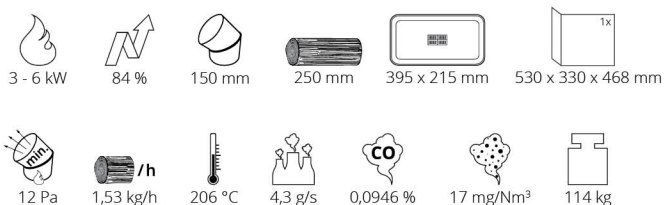
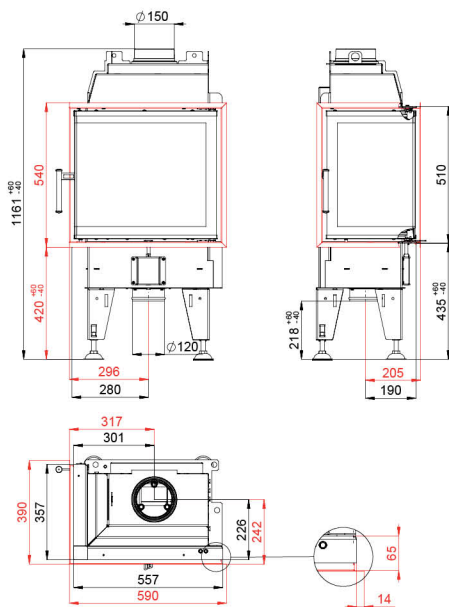


BEF FEEL 6 CL/CP

BImSchV
Stufe 2

15a
B - VG

ČSN EN
13229



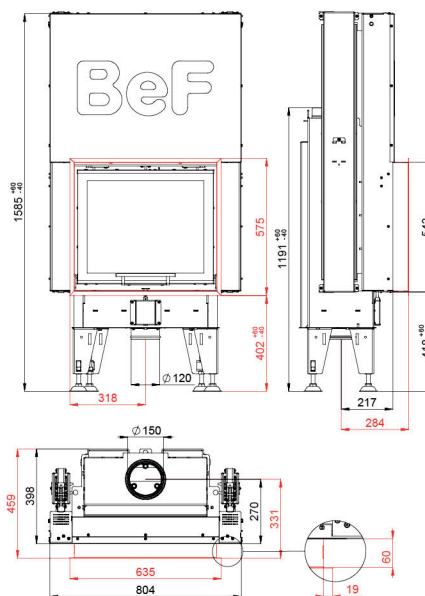


BEF FEEL V 6

BImSchV
Stufe 2

15a
B - VG

ČSN EN
13229

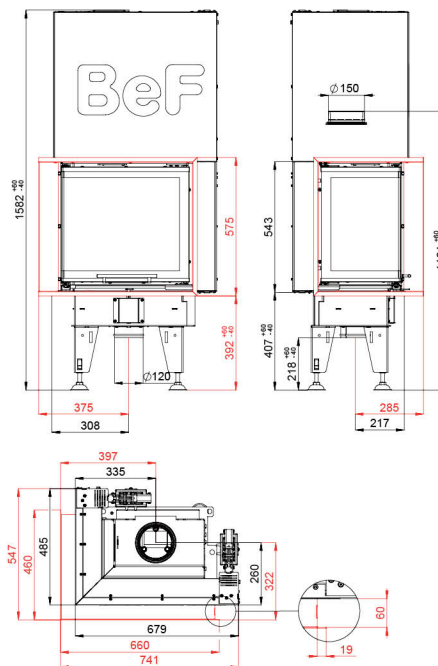


BEF FEEL V 6 CL/CP

BImSchV
Stufe 2

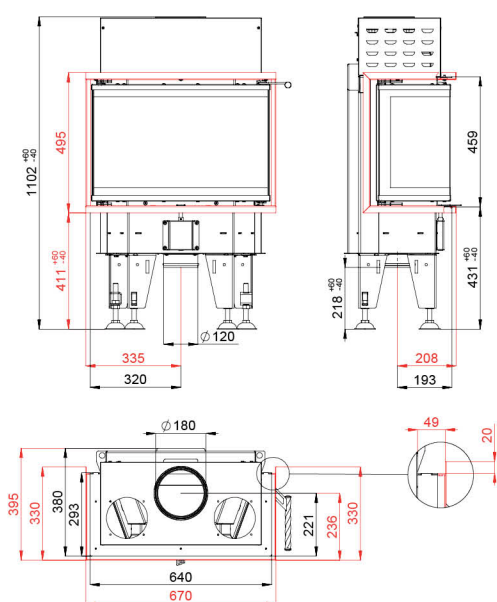
15a
B - VG

ČSN EN
13229





BEF FEEL 6 C



BImSchV
Stufe 2

15a
B - VG

ČSN EN
13229

eco
design



3 - 6 kW
 84 %
 180 mm
 250 mm
 435 x 220 mm
 624 x 250 x 400 mm

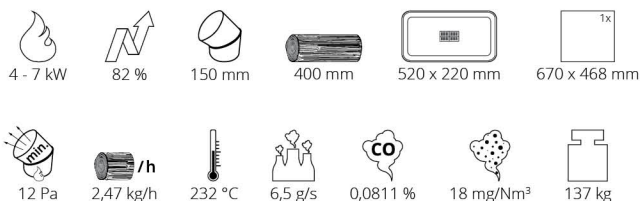
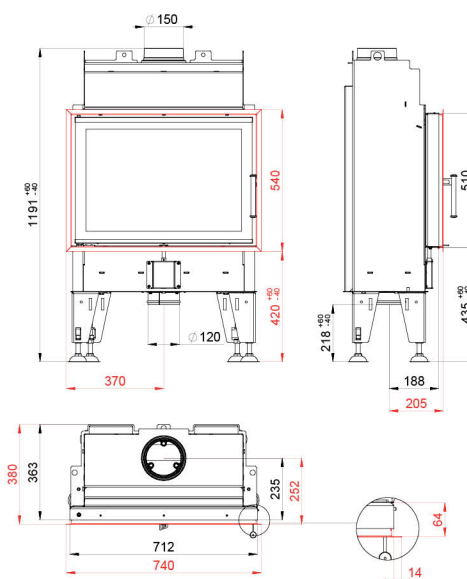
12 Pa
 1,53 kg/h
 206 °C
 4,3 g/s
 0,0946 %
 17 mg/Nm³
 115 kg

BEF FEEL 7

BlmSchV
Stufe 2

15a
B - VG

ČSN EN
13229

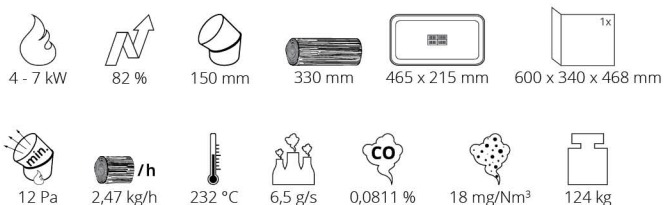
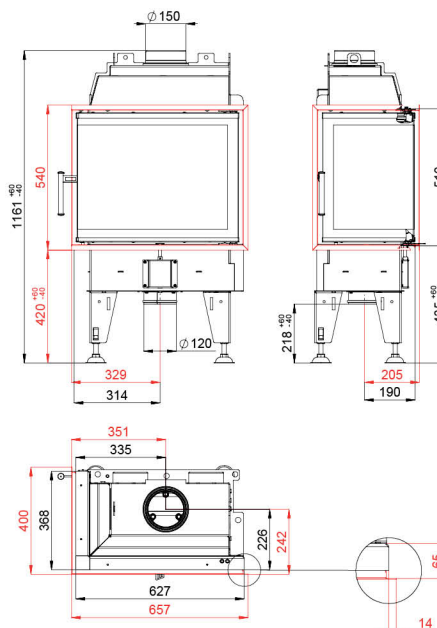


BEF FEEL 7 CL/CP

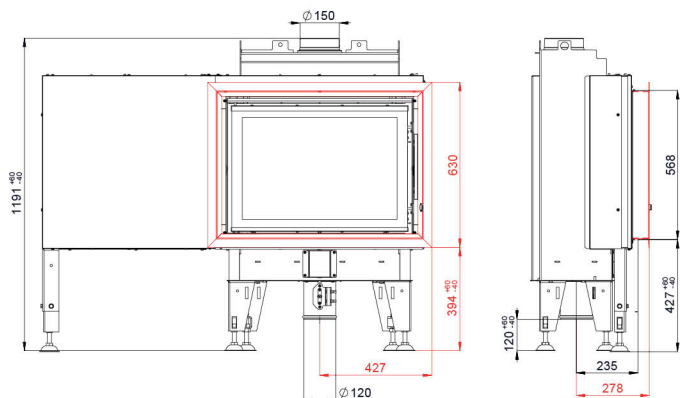
BlmSchV
Stufe 2

15a
B - VG

ČSN EN
13229



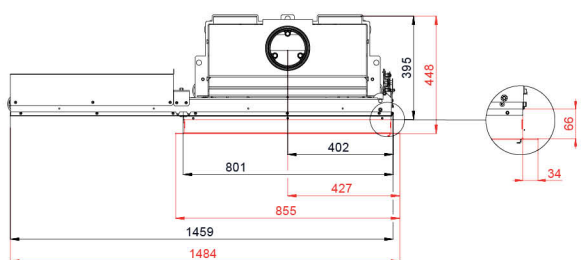
BEF FEEL B 7



BImSchV
Stufe 2

15a
B - VG

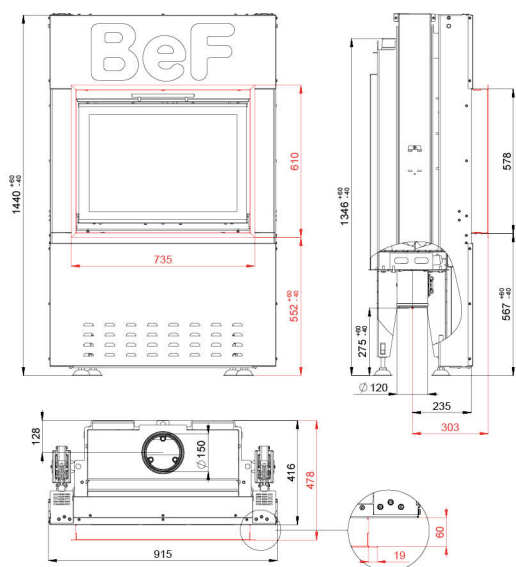
ČSN EN
13229



- 4 - 7 kW
- 82 %
- 150 mm
- 400 mm
- 520 x 220 mm
- 670 x 468 mm

- 12 Pa
- 2,47 kg/h
- 232 °C
- 6,5 g/s
- 0,0811 %
- 18 mg/Nm³
- 195 kg

BEF FEEL S 7



BImSchV
Stufe 2

15a
B - VG

ČSN EN
13229



- 4 - 7 kW
- 82 %
- 150 mm
- 400 mm
- 520 x 220 mm
- 670 x 468 mm

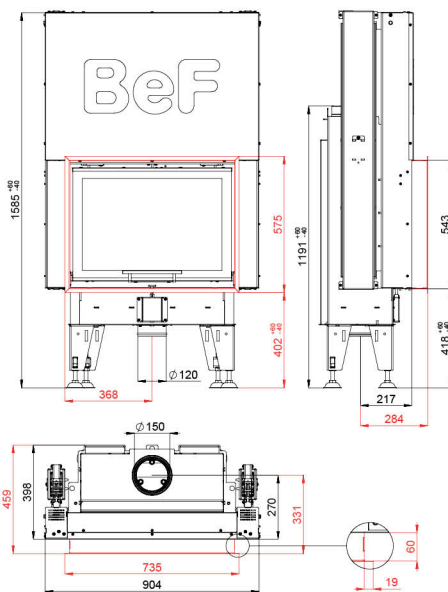
- 12 Pa
- 2,47 kg/h
- 232 °C
- 6,5 g/s
- 0,0811 %
- 18 mg/Nm³
- 244 kg

BEF FEEL V 7

BImSchV
Stufe 2

15a
B - VG

ČSN EN
13229

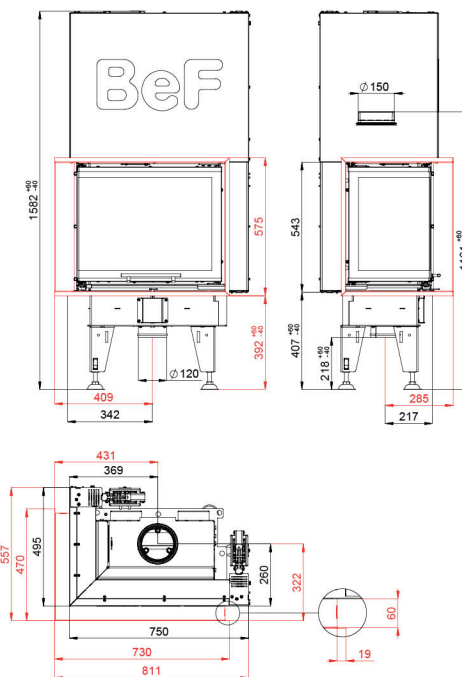


BEF FEEL V 7 CL/CP

BImSchV
Stufe 2

15a
B - VG

ČSN EN
13229



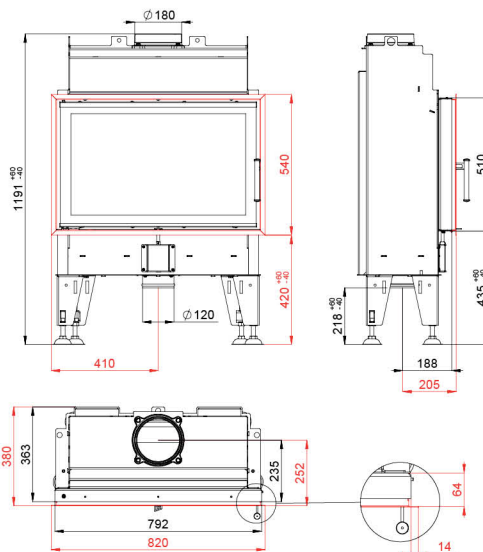


BEF FEEL 8

BImSchV
Stufe 2

15a
B - VG

ČSN EN
13229

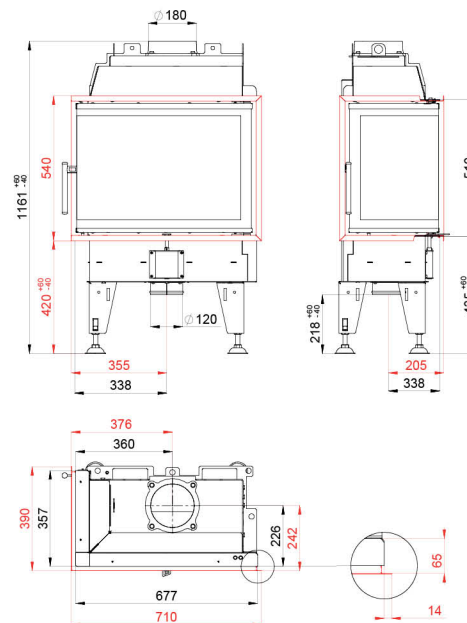


BEF FEEL 8 CL/CP

BImSchV
Stufe 2

15a
B - VG

ČSN EN
13229



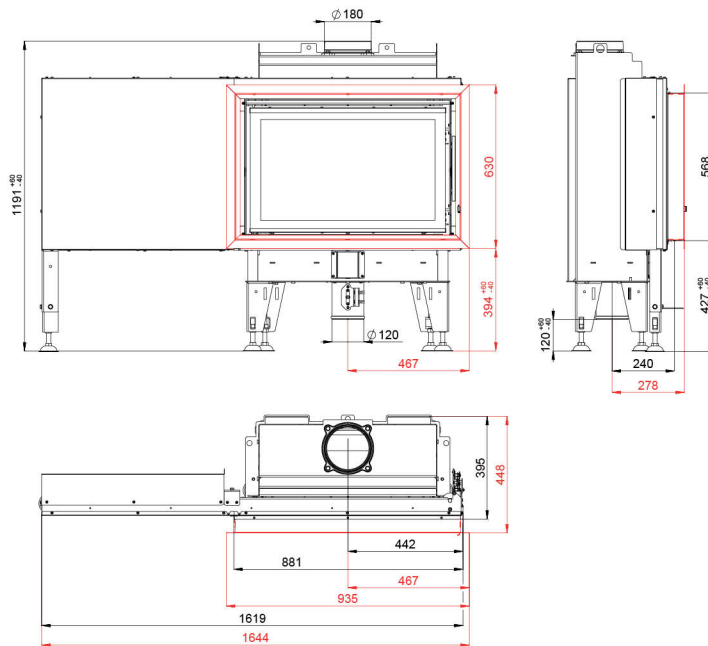


BEF FEEL B 8

BImSchV
Stufe 2

15a
B - VG

ČSN EN
13229

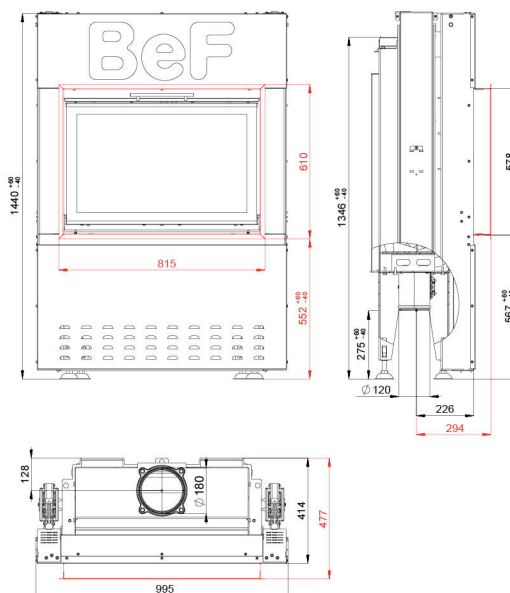


BEF FEEL S 8

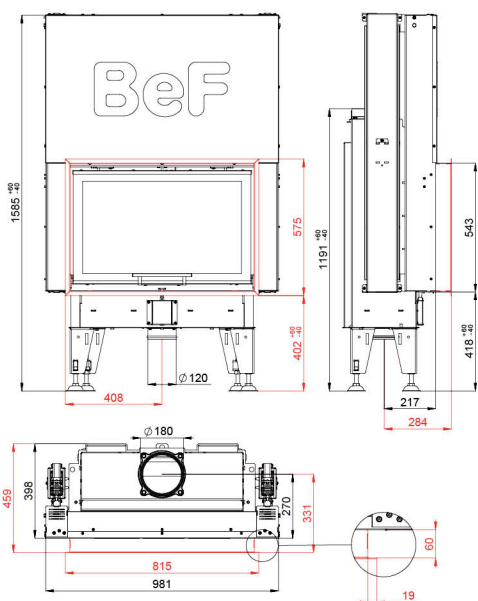
BImSchV
Stufe 2

15a
B - VG

ČSN EN
13229



BEF FEEL V 8



BImSchV
Stufe 2

15a
B - VG

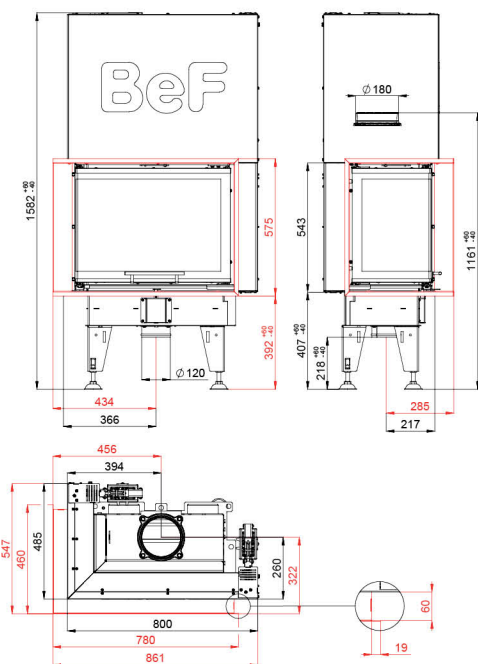
ČSN EN
13229



- 5 - 8 kW
- 85 %
- 180 mm
- 500 mm
- 600 x 220 mm
- 1x

- 12 Pa
- 2,54 kg/h
- 212 °C
- 6 g/s
- 0,0932 %
- 16 mg/Nm³
- 231 kg

BEF FEEL V 8 CL/CP



BImSchV
Stufe 2

15a
B - VG

ČSN EN
13229



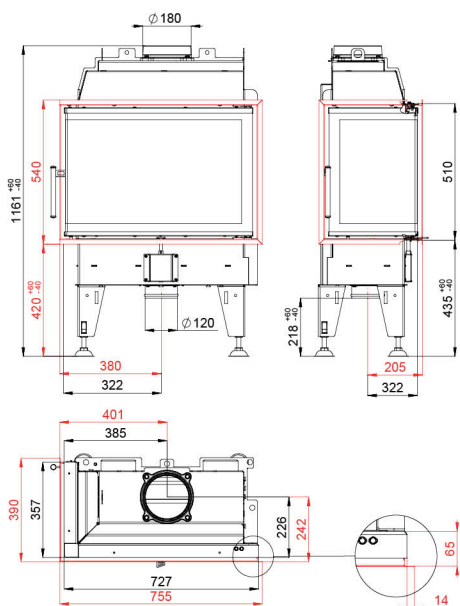
- 5 - 8 kW
- 85 %
- 180 mm
- 400 mm
- 515 x 215 mm
- 1x

- 12 Pa
- 2,54 kg/h
- 212 °C
- 6 g/s
- 0,0932 %
- 16 mg/Nm³
- 215 kg



BEF FEEL 9 CL/CP

ČSN EN
13229

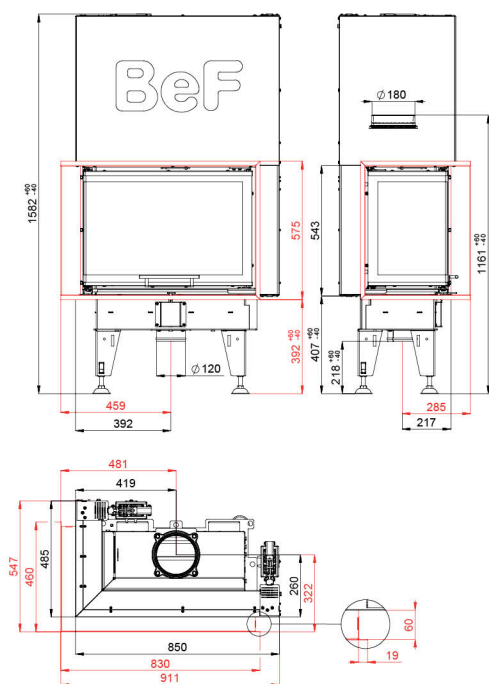


- 5 - 8 kW
- 85 %
- 180 mm
- 500 mm
- 565 x 215 mm
- 700 x 330 x 468 mm

- 12 Pa
- 2,54 kg/h
- 212 °C
- 6 g/s
- 0,0932 %
- 16 mg/Nm³
- 138 kg

BEF FEEL V 9 CL/CP

ČSN EN
13229

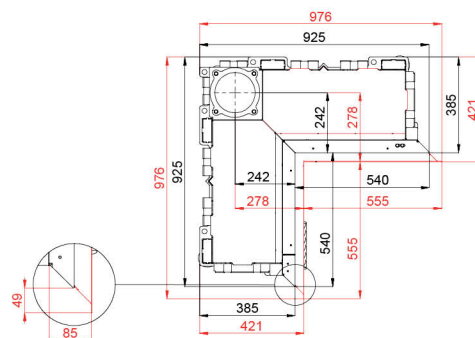
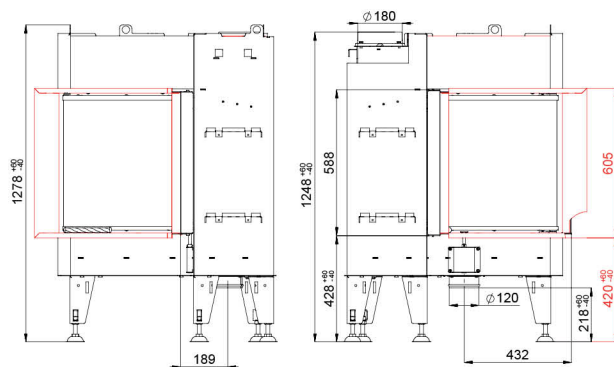


- 5 - 8 kW
- 85 %
- 180 mm
- 500 mm
- 565 x 215 mm
- 700 x 330 x 468 mm

- 12 Pa
- 2,54 kg/h
- 212 °C
- 6 g/s
- 0,0932 %
- 16 mg/Nm³
- 232 kg

BEF FLAT 4 L

ČSN EN 13229



- 5 - 8 kW
- 82 %
- 180 mm
- 600 mm
- 707 x 229 mm
707 x 229 mm
- 480 x 480 x 532 mm

- 10 Pa
- 2,22 kg/h
- 267 °C
- 9 g/s
- 0,0673 %
- 26 mg/Nm³
- 262 kg

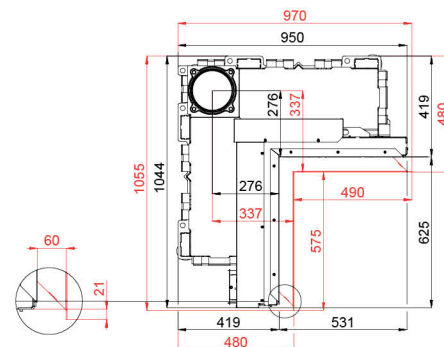
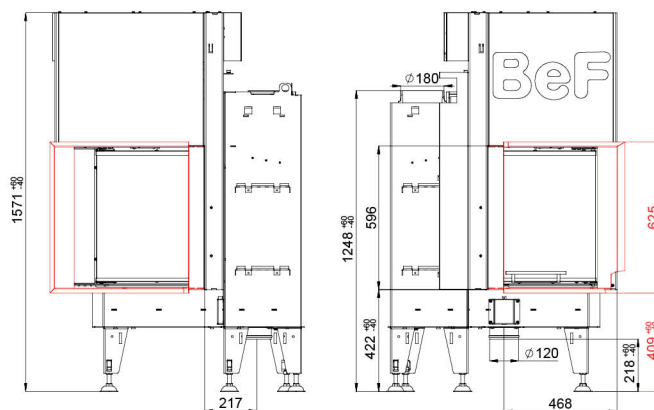
BEF FLAT V 4 L

BImSchV Stufe 2

15a B - VG

ČSN EN 13229

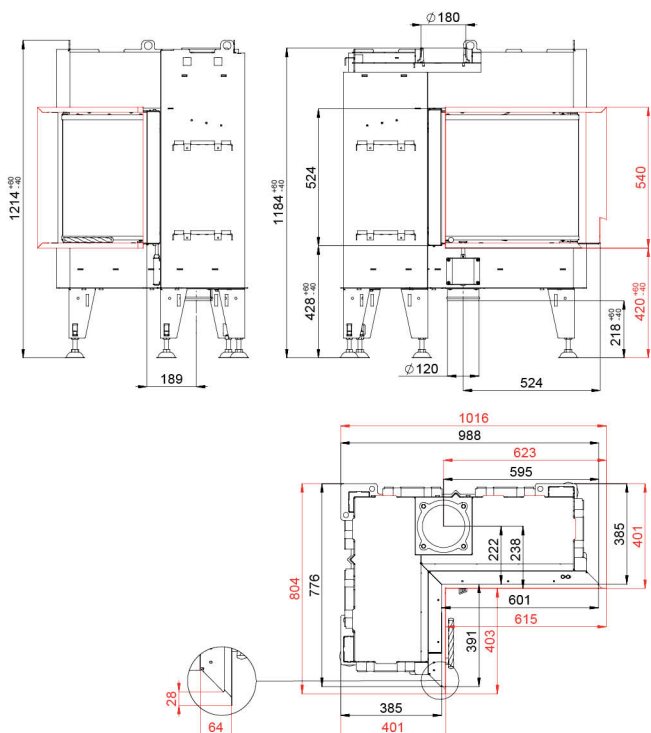
eco design



- 5 - 8 kW
- 82 %
- 180 mm
- 600 mm
- 707 x 229 mm
707 x 229 mm
- 480 x 480 x 532 mm

- 10 Pa
- 2,22 kg/h
- 267 °C
- 9 g/s
- 0,0673 %
- 26 mg/Nm³
- 351 kg

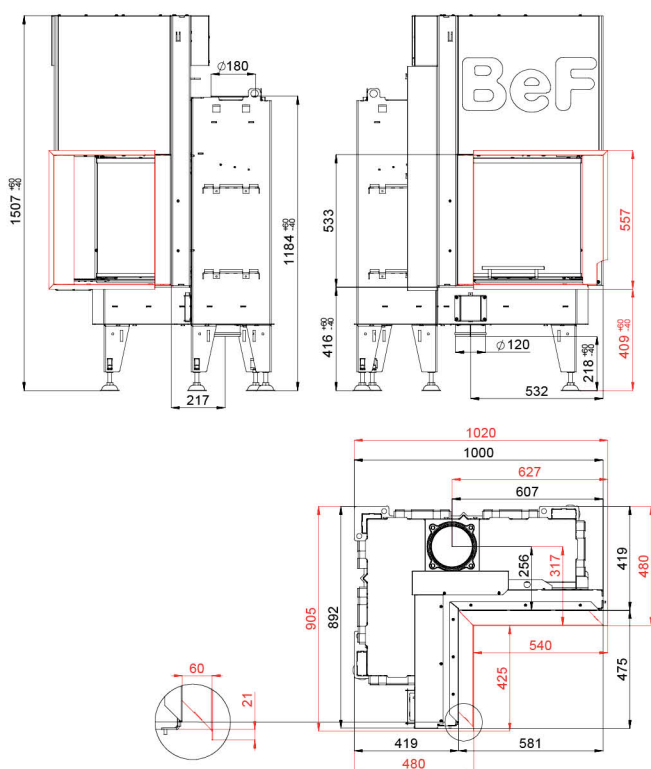
BEF FLAT 6 L



ČSN EN 13229

- 3 - 6 kW
- 81 %
- 180 mm
- 400 mm
- 767 x 229 mm
558 x 229 mm
- 530 x 330 x 468 mm
- 12 Pa
- 1,53 kg/h
- 206 °C
- 4,3 g/s
- 0,0946 %
- 17 mg/Nm³
- 244 kg

BEF FLAT V 6 L



BImSchV Stufe 2

15a B - VG

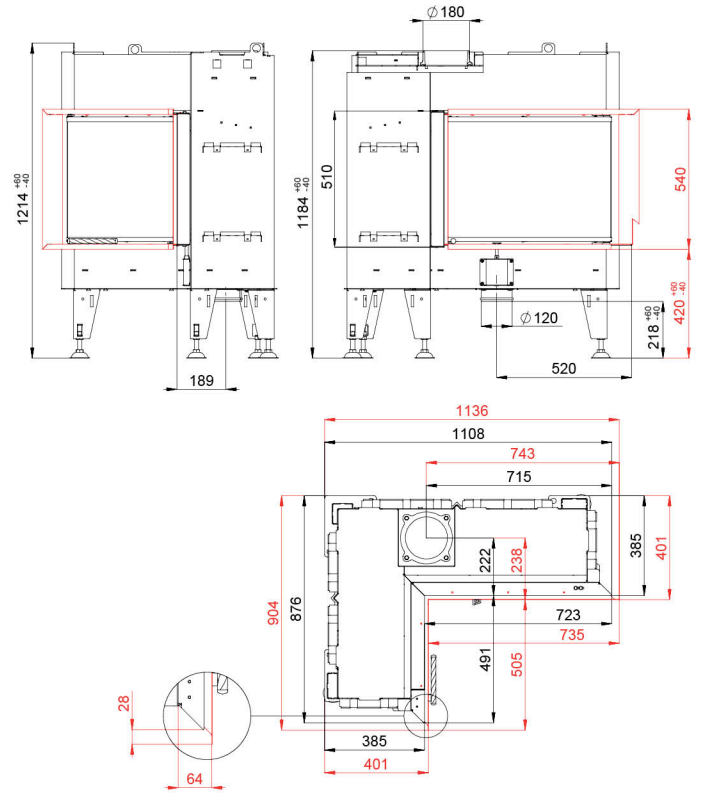
ČSN EN 13229

eco design

- 3 - 6 kW
- 81 %
- 180 mm
- 400 mm
- 767 x 229 mm
558 x 229 mm
- 530 x 330 x 468 mm
- 12 Pa
- 1,53 kg/h
- 206 °C
- 4,3 g/s
- 0,0946 %
- 17 mg/Nm³
- 322 kg

BEF FLAT 8 L

ČSN EN 13229



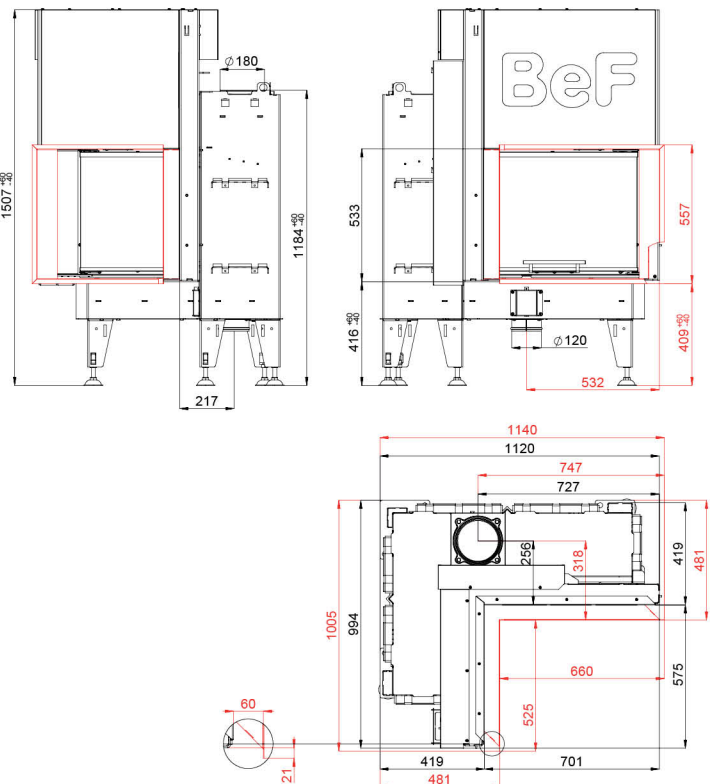
BEF FLAT V 8 L

BimSchV Stufe 2

15a B - VG

ČSN EN 13229

eco design



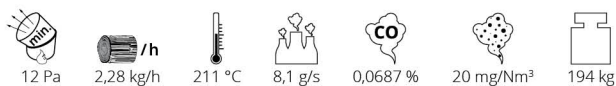
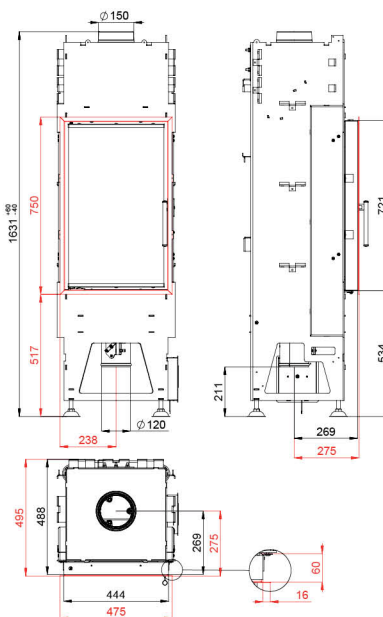


BEF TOWER 5 H

BImSchV
Stufe 2

15a
B - VG

ČSN EN
13229

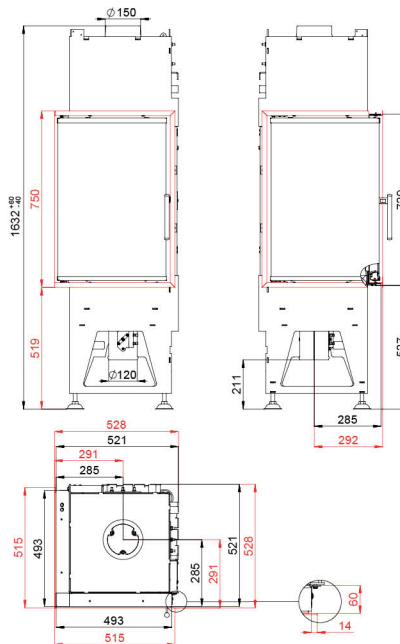


BEF TOWER 5 EH

BImSchV
Stufe 2

15a
B - VG

ČSN EN
13229

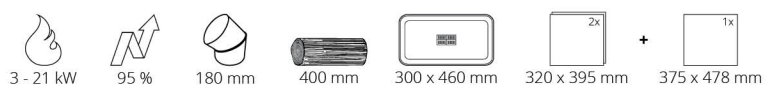
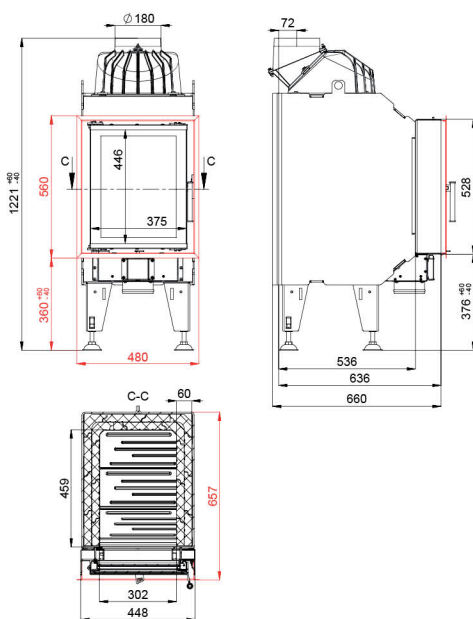




BEF LONG 7

ČSN EN
13229

eco
design

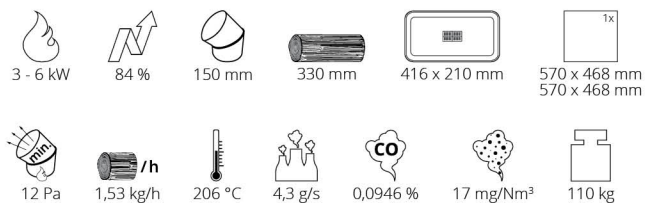
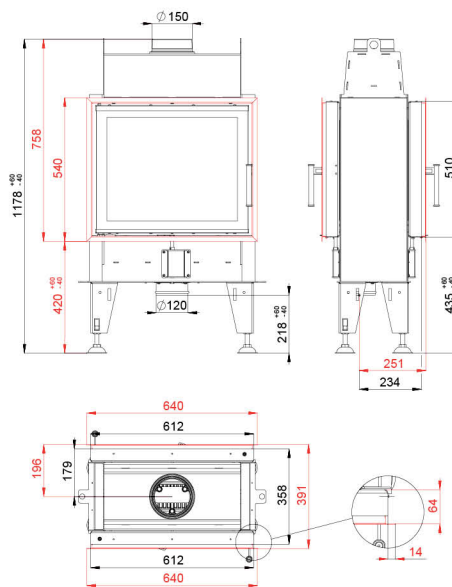


BEF DOUBLE 6 FEEL

BImSchV
Stufe 2

15a
B - VG

ČSN EN
13229

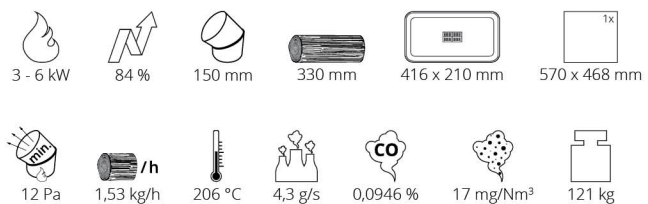
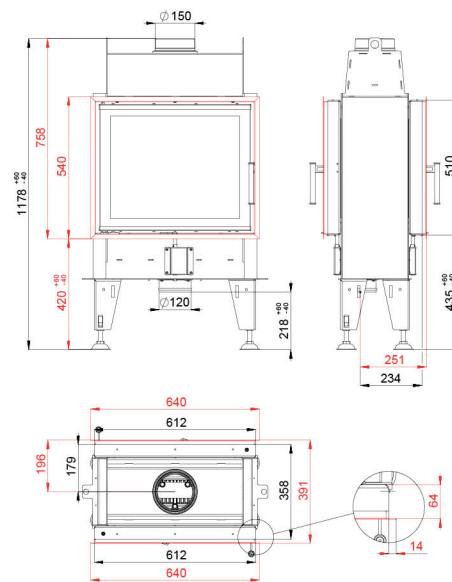


BEF DOUBLE 6 N FEEL

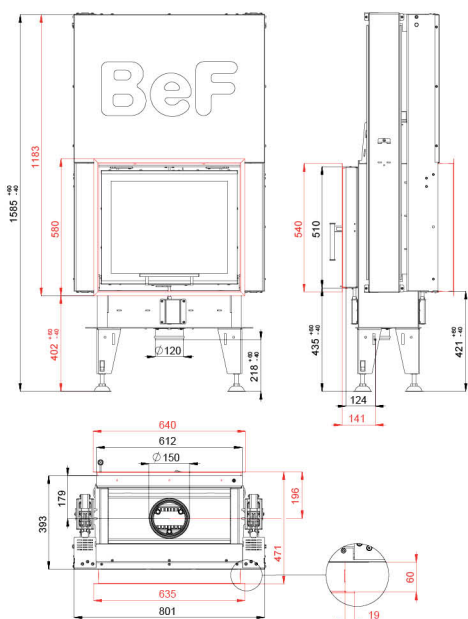
BImSchV
Stufe 2

15a
B - VG

ČSN EN
13229



BEF DOUBLE V 6 FEEL



BImSchV
Stufe 2

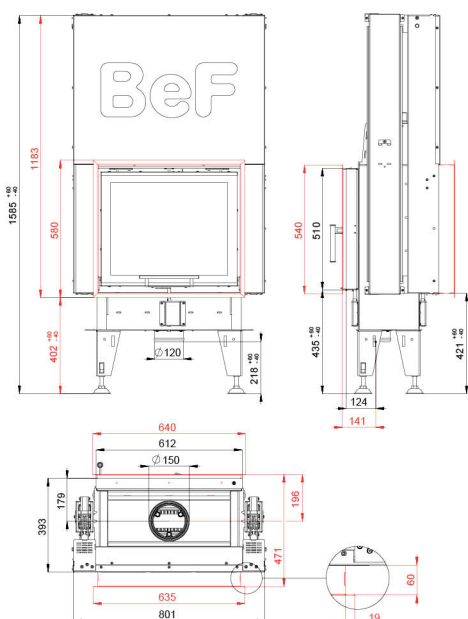
15a
B - VG

ČSN EN
13229



- 3 - 6 kW
- 84 %
- 150 mm
- 330 mm
- 416 x 210 mm
- 570 x 468 mm
570 x 468 mm
- 12 Pa
- 1,53 kg/h
- 206 °C
- 4,3 g/s
- 0,0946 %
- 17 mg/Nm³
- 194 kg

BEF DOUBLE V 6 N FEEL



BImSchV
Stufe 2

15a
B - VG

ČSN EN
13229



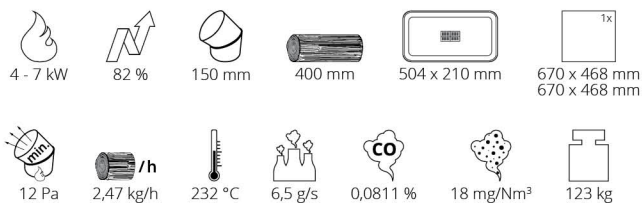
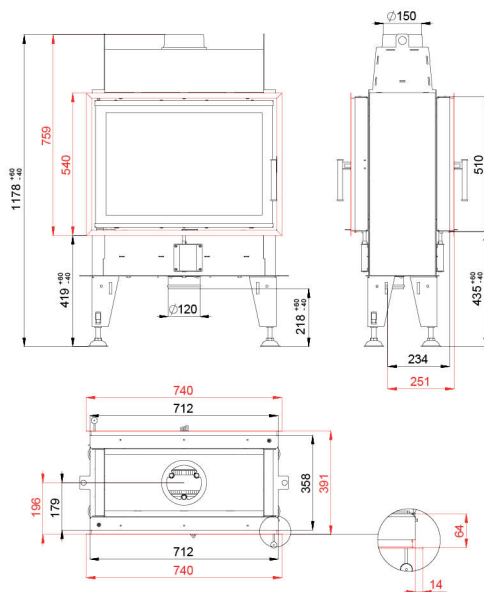
- 3 - 6 kW
- 84 %
- 150 mm
- 330 mm
- 416 x 210 mm
- 570 x 468 mm
- 12 Pa
- 1,53 kg/h
- 206 °C
- 4,3 g/s
- 0,0946 %
- 17 mg/Nm³
- 196 kg

BEF DOUBLE 7 FEEL

BImSchV
Stufe 2

15a
B - VG

ČSN EN
13229

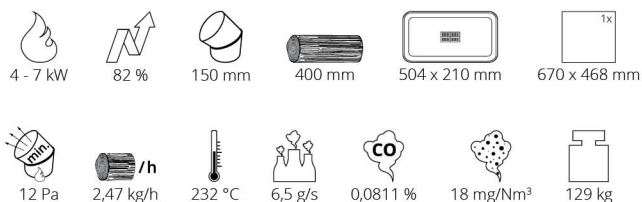
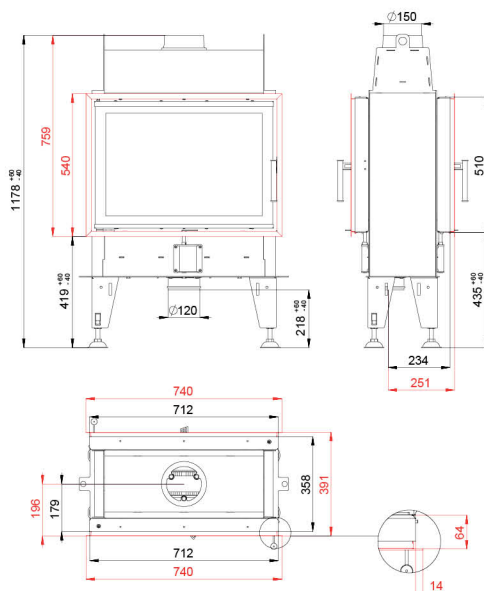


BEF DOUBLE 7 N FEEL

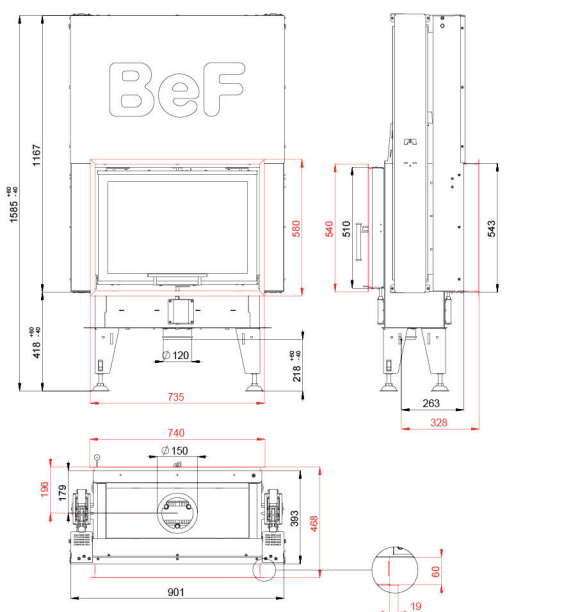
BImSchV
Stufe 2

15a
B - VG

ČSN EN
13229



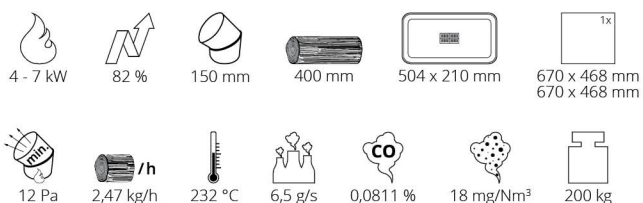
BEF DOUBLE V 7 FEEL



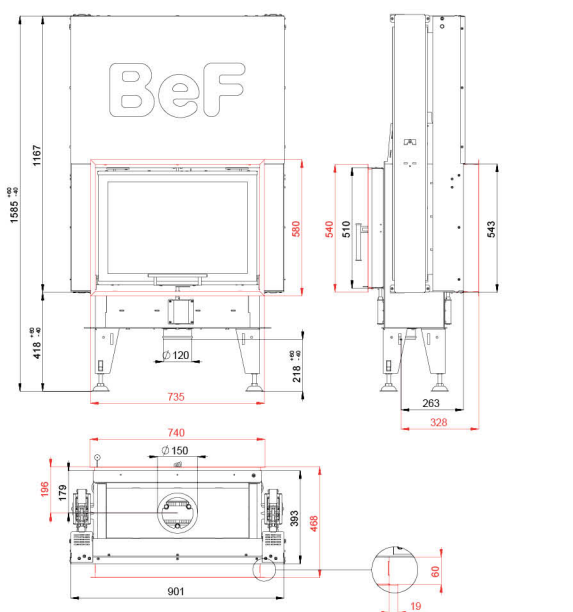
BImSchV
Stufe 2

15a
B - VG

ČSN EN
13229



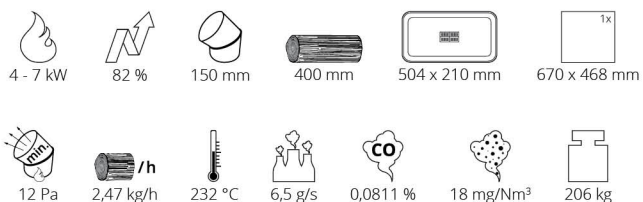
BEF DOUBLE V 7 N FEEL



BImSchV
Stufe 2

15a
B - VG

ČSN EN
13229

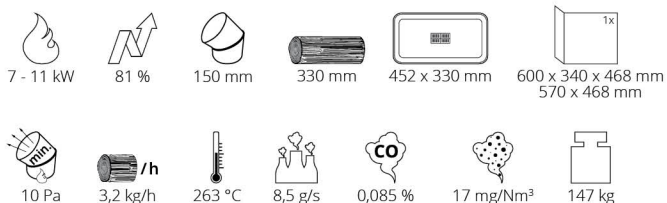
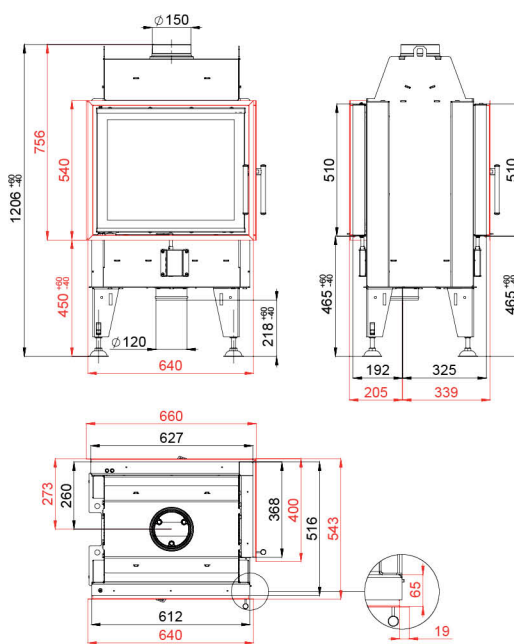


BEF TWIN 7 CL/CP

BImSchV
Stufe 2

15a
B - VG

ČSN EN
13229

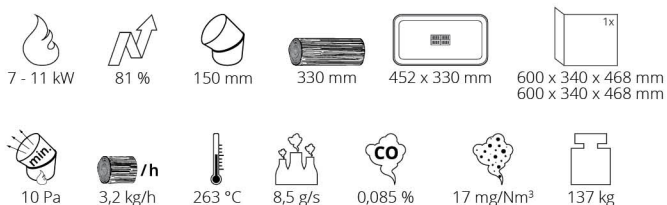
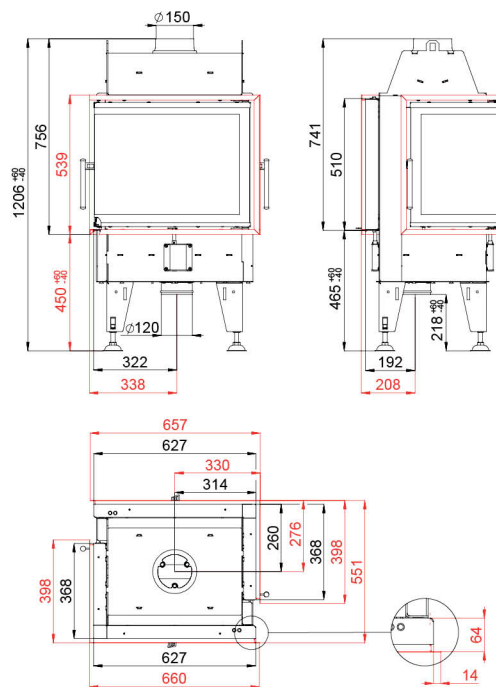


BEF TWIN 7 CL-CL/CP-CP

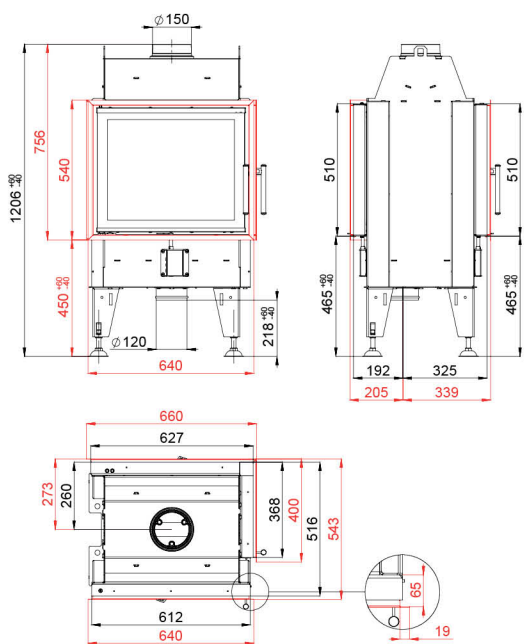
BImSchV
Stufe 2

15a
B - VG

ČSN EN
13229



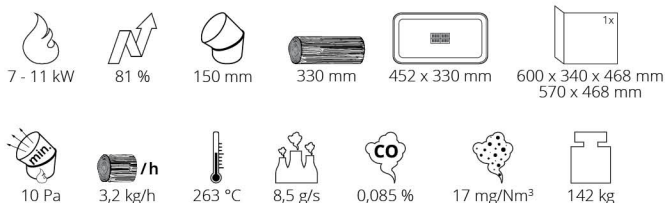
BEF TWIN 7 N CL/CP



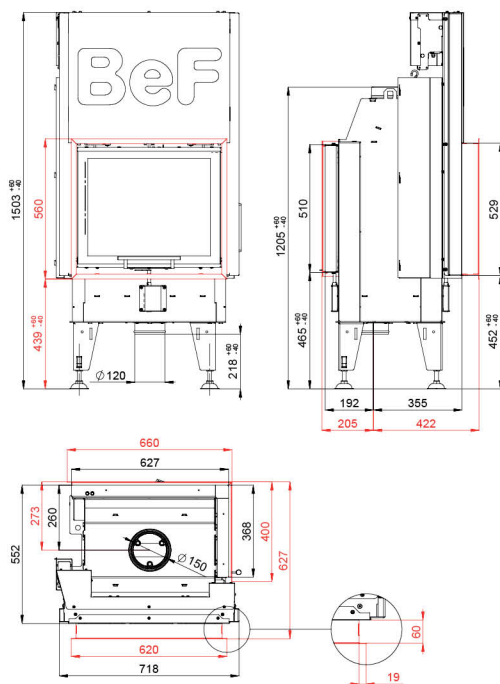
BImSchV
Stufe 2

15a
B - VG

ČSN EN
13229



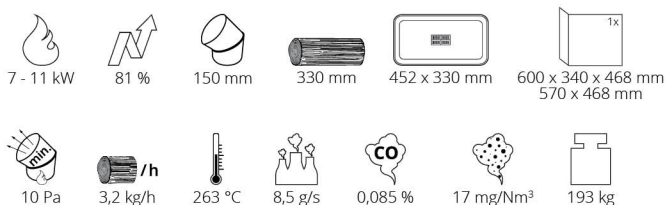
BEF TWIN V 7 CL/CP



BImSchV
Stufe 2

15a
B - VG

ČSN EN
13229

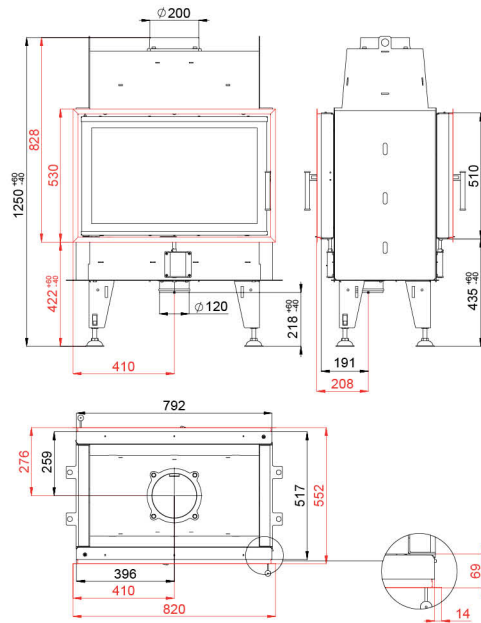


BEF TWIN 8 II.

BImSchV
Stufe 2

15a
B - VG

ČSN EN
13229

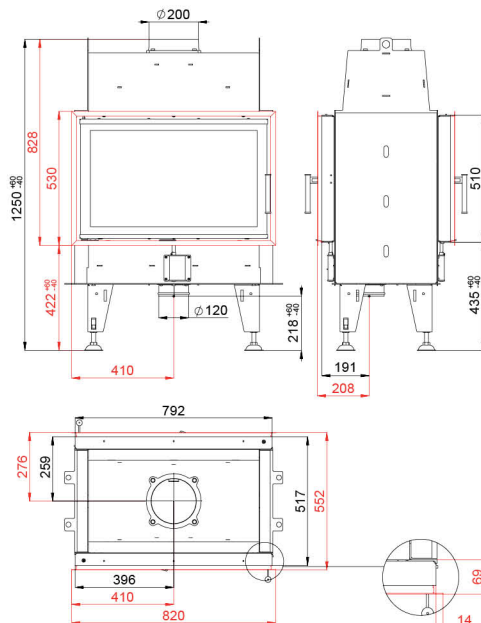


BEF TWIN 8 N II.

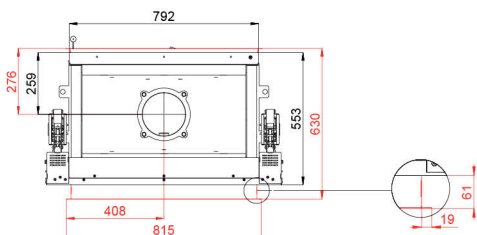
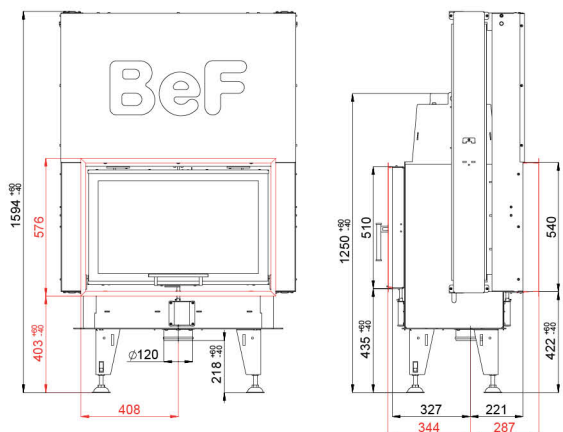
BImSchV
Stufe 2

15a
B - VG

ČSN EN
13229



BEF TWIN V 8 II.



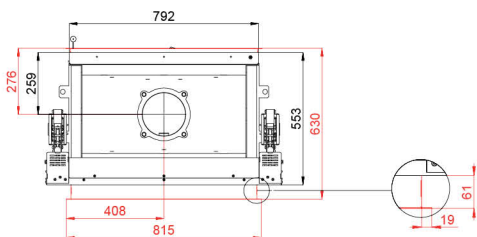
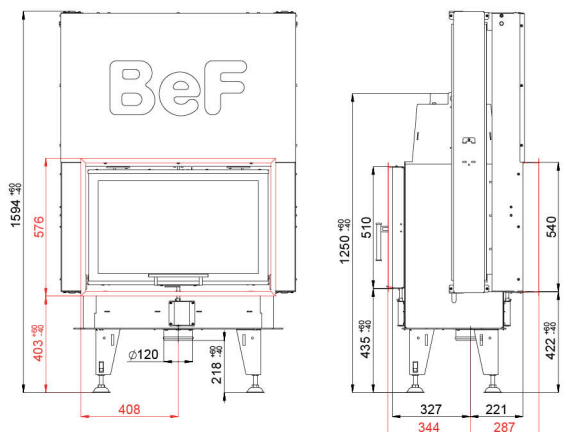
BImSchV
Stufe 2

15a
B - VG

ČSN EN
13229



BEF TWIN V 8 N II.



BImSchV
Stufe 2

15a
B - VG

ČSN EN
13229

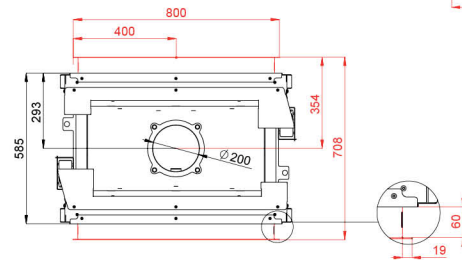
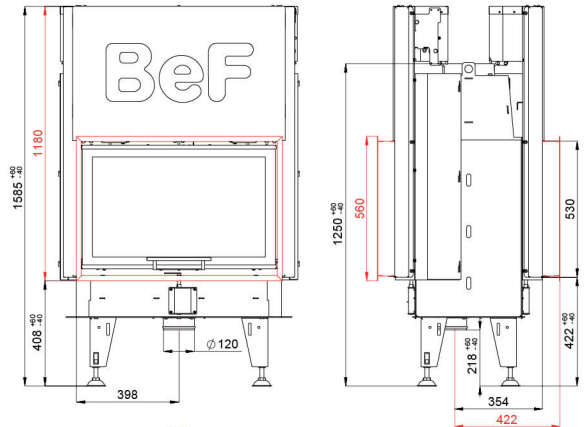


BEF TWIN V V 8

BlmSchV
Stufe 2

15a
B - VG

ČSN EN
13229

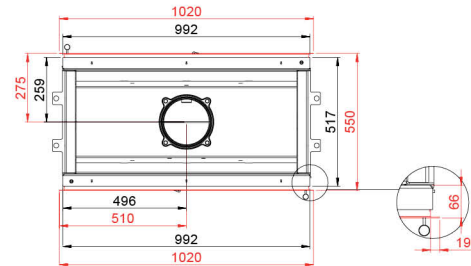
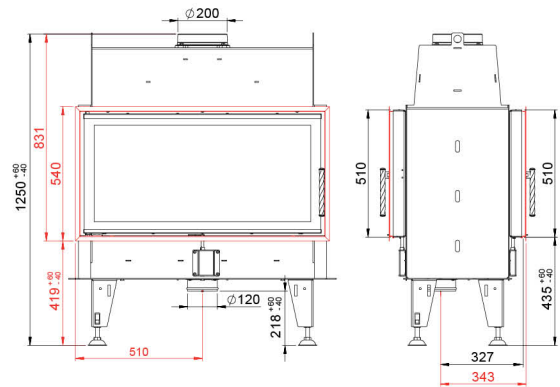


BEF TWIN 10 II.

BlmSchV
Stufe 2

15a
B - VG

ČSN EN
13229



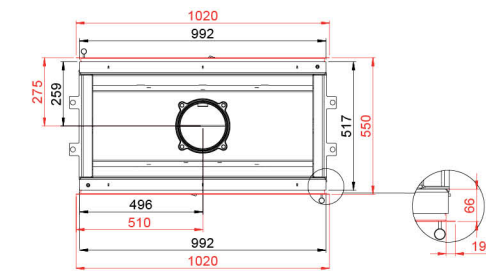
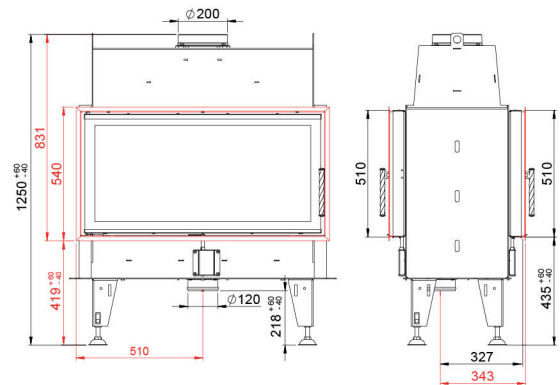


BEF TWIN 10 N II.

BImSchV
Stufe 2

15a
B - VG

ČSN EN
13229

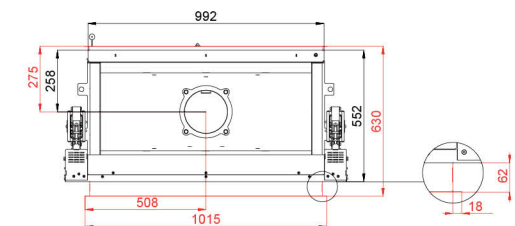
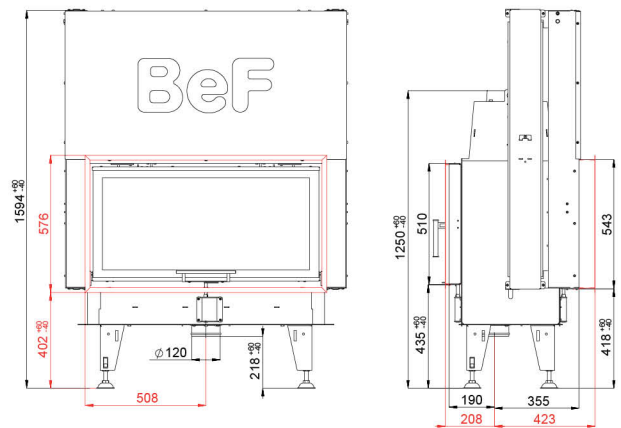


BEF TWIN V 10 II.

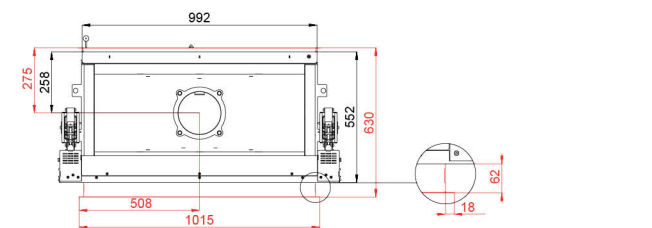
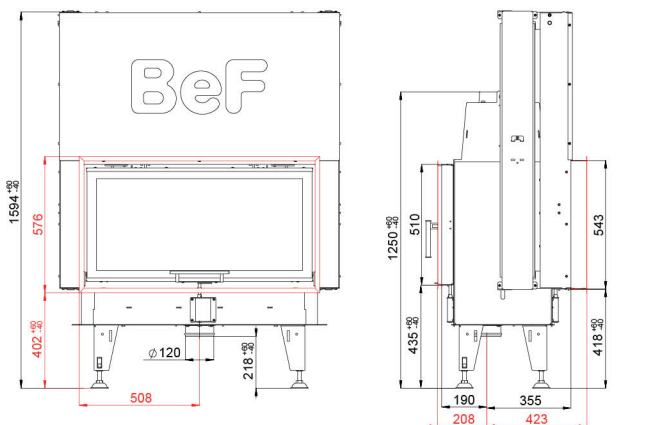
BImSchV
Stufe 2

15a
B - VG

ČSN EN
13229



BEF TWIN V 10 N II.



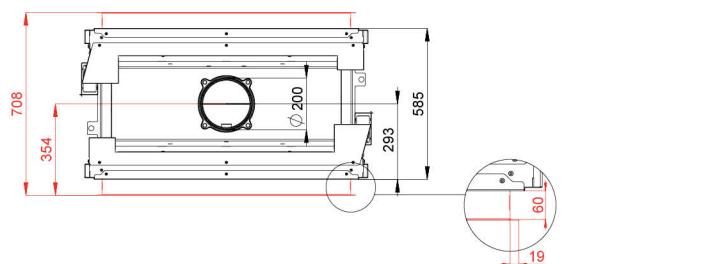
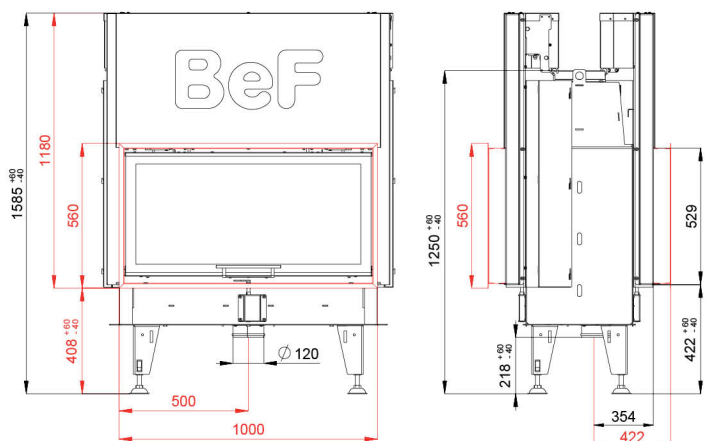
BImSchV
Stufe 2

15a
B - VG

ČSN EN
13229



BEF TWIN V V 10



BImSchV
Stufe 2

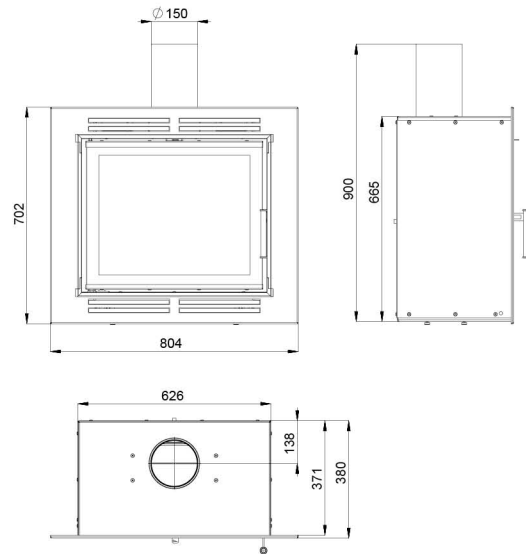
15a
B - VG

ČSN EN
13229



BEF EFFI 6

ČSN EN 13229

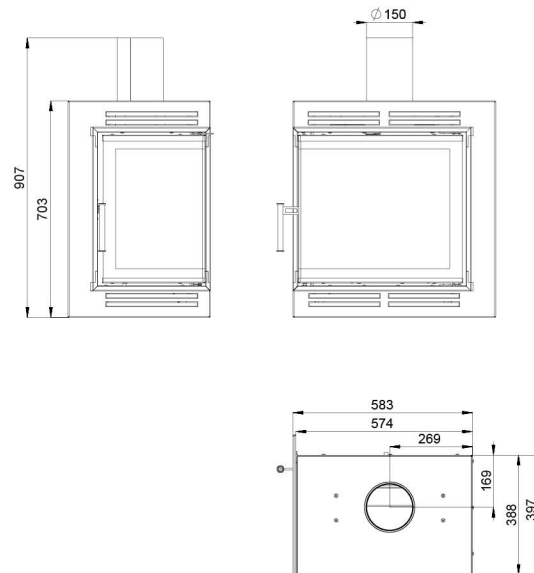


- 3 - 6 kW
- 84 %
- 150 mm
- 330 mm
- 410 x 180 mm
- 570 x 468 mm

- 12 Pa
- 1,53 kg/h
- 206 °C
- 4,3 g/s
- 0,0946 %
- 17 mg/Nm³
- 118 kg

BEF EFFI 6 CL/CP

ČSN EN 13229



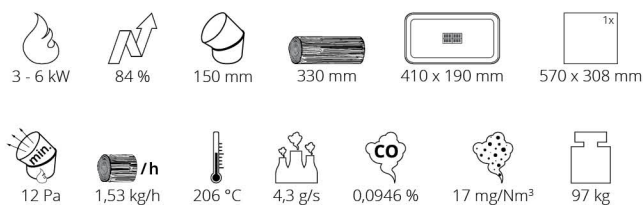
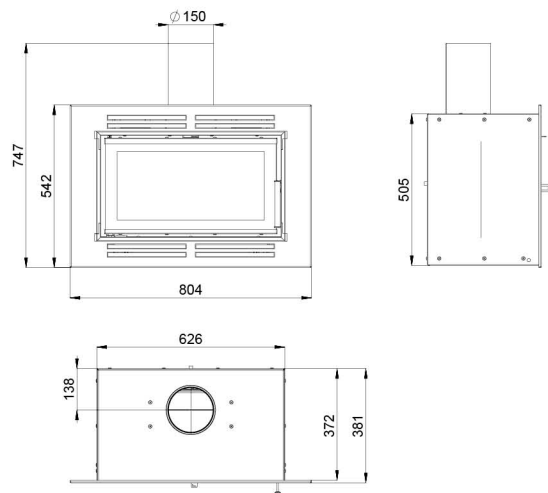
- 3 - 6 kW
- 84 %
- 150 mm
- 330 mm
- 360 x 170 mm
- 530 x 330 x 468 mm

- 12 Pa
- 1,53 kg/h
- 206 °C
- 4,3 g/s
- 0,0946 %
- 17 mg/Nm³
- 99 kg



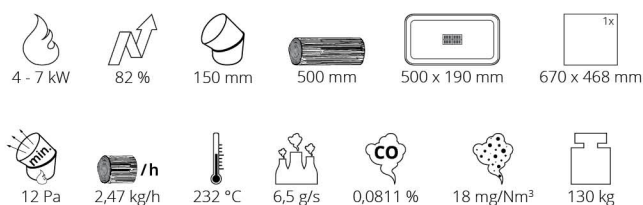
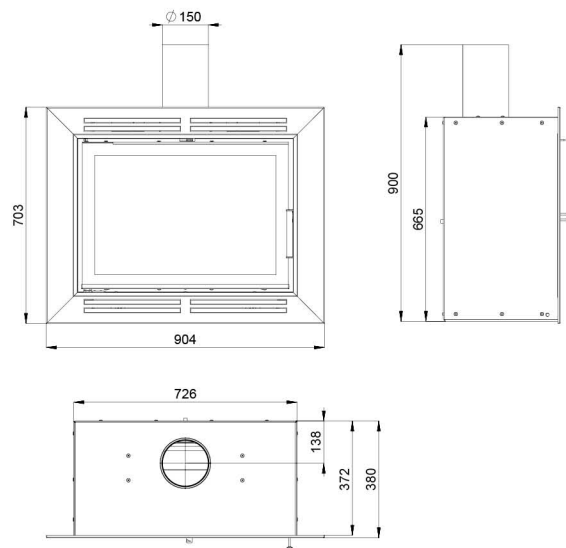
BEF EFFI 6 S

ČSN EN 13229

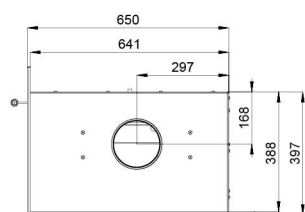
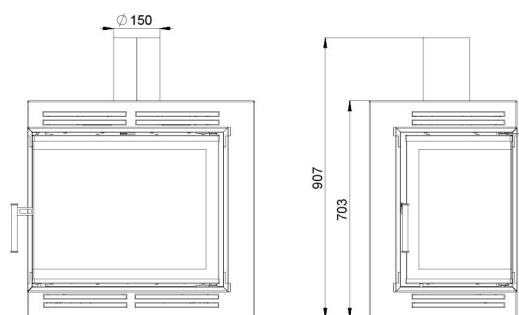


BEF EFFI 7

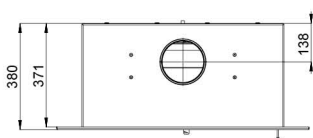
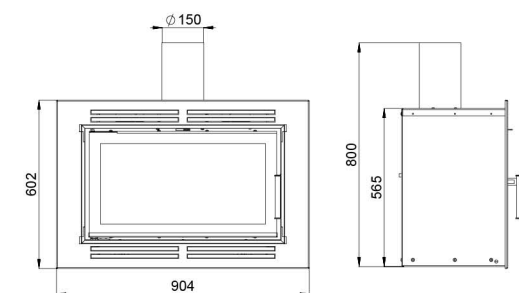
ČSN EN 13229



BEF EFFI 7 CL/CP

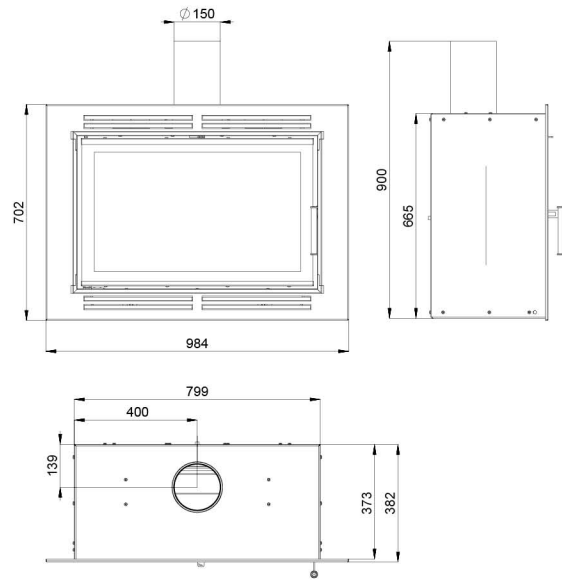
ČSN EN
13229

BEF EFFI 7 S

ČSN EN
13229

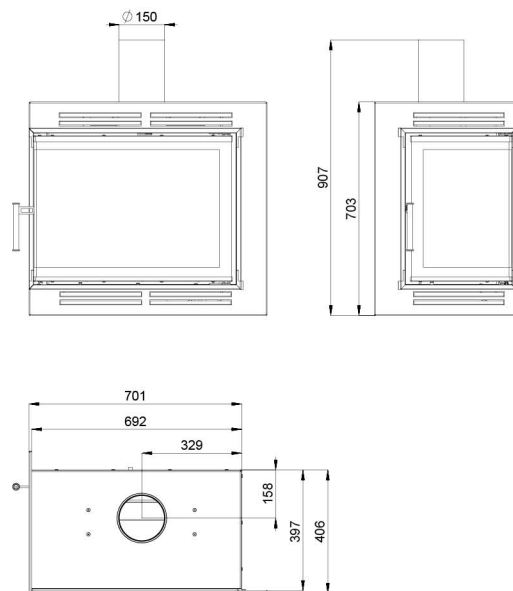
BEF EFFI 8

ČSN EN 13229



BEF EFFI 8 CL/CP

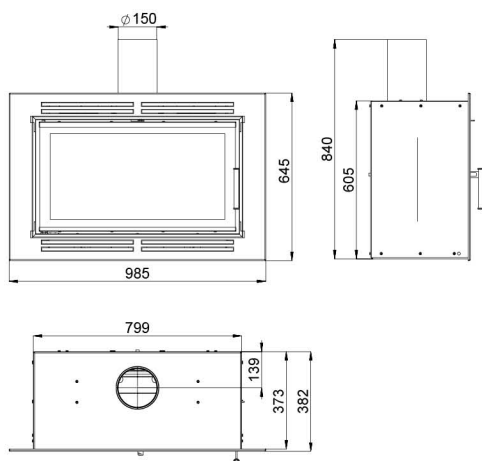
ČSN EN 13229





BEF EFFI 8 S

ČSN EN
13229



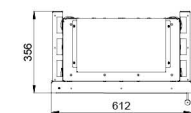
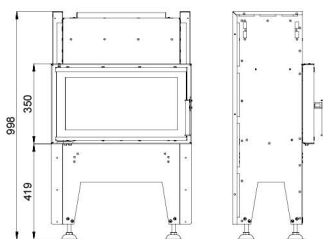
 5 - 8 kW
  85 %
  150 mm
  500 mm
  580 x 170 mm
  750 x 408 mm

 12 Pa
  2,54 kg/h
  212 °C
  6 g/s
  0,0932 %
  16 mg/Nm³
  128 kg

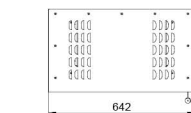
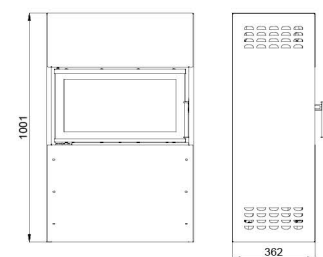
BEF SPIRIT 6

ČSN EN 13229

- White 
- Pearl Beige 
- Latte 
- Mocca 
- Antracit 
- Bordeaux 
- Ferrari 
- Azzurro 



 2,5 h.  ETHANOL 2 l  51 kg

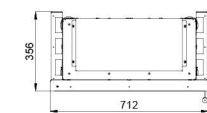
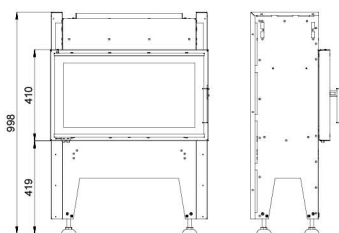





 2,5 h.  ETHANOL 2 l  69 kg

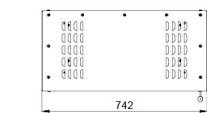
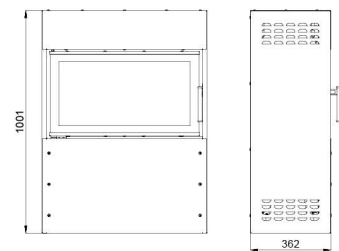
BEF SPIRIT 7




ČSN EN 13229

- White 
- Pearl Beige 
- Latte 
- Mocca 
- Antracit 
- Bordeaux 
- Ferrari 
- Azzurro 



 3,5 h.  ETHANOL 2,5 l  57 kg



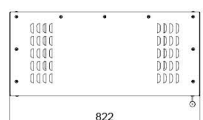
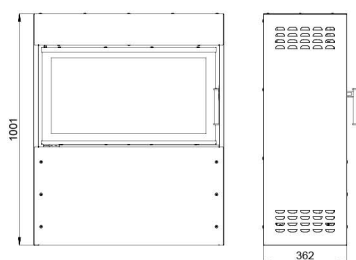
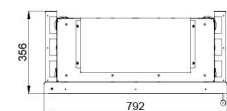
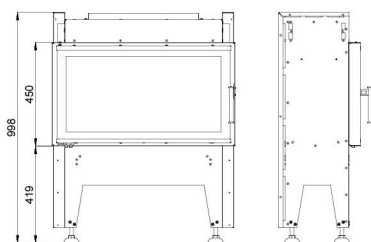
 3,5 h.  ETHANOL 2,5 l  76 kg



BEF SPIRIT 8

ČSN EN
13229

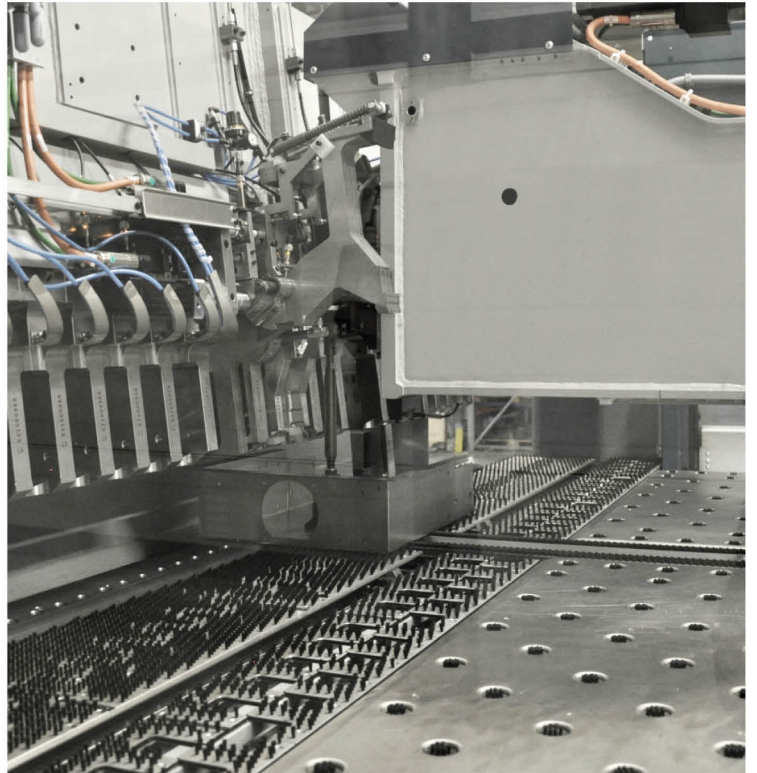
-  White
-  Pearl Beige
-  Latte
-  Mocca
-  Antracit
-  Bordeaux
-  Ferrari
-  Azzurro



BEF RUSTICAL

16:9





* These data are informative, the manufacturer reserves the right to change.

Your dealer:



Kotvrdovice 277, 679 07 Kotvrdovice, Czech republic
tel.: +420 516 428 240
e-mail: info@bef.cz
www.befhome.com

